



## Tulse Hill, SW2

**£3,200** Per calendar month

A top floor, split-level three bedroom flat in Tulse Hill. The property has been recently refurbished and offers a large reception room, separate kitchen and two bathrooms. Ideal for professional sharers.

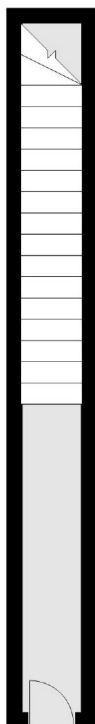
Ideally located for central Brixton and its many shops, bars and restaurants. As well as the famous Brockwell Park with its green open spaces.

### Features

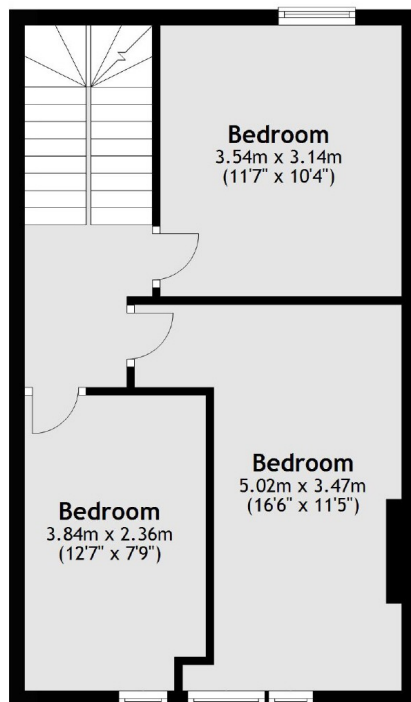
- Three Double Bedrooms
- Large Reception Room
- Separate Kitchen
- Two Bathrooms
- Split-Level
- Recently Refurbished

# Tulse Hill, London, SW2

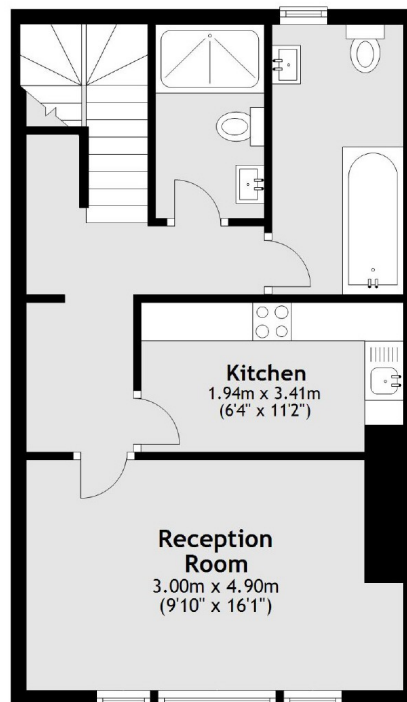
Ground Floor



First Floor



Second Floor



Total area: approx. 91.6 sq. metres (985.9 sq. feet)