



**Helix Road, SW2**

**£4,400** Per week

**Dexters**



## Helix Road, SW2

A four bedroom, double reception room family home, offering a spacious living and entertaining space over three floors and a substantial private rear garden.

This stunning mid-terrace is finished to a high standard whilst maintaining its charm with a number of original features.

The ground floor of the property features a large living space with a feature fireplace. This leads onto a fitted kitchen with an additional dining space, meaning you'll have plenty of room to cook. With access to the generously sized garden, you'll be an extra busy host in the Summer! The first and second floor accommodates the master bedroom, a further three double bedrooms and two full family bathrooms.

On a residential road just off Brixton Hill, offering transport links to the city as well as the vibrant Brixton Market, with its mix of bars and restaurants.

### Features

- Four Double Bedrooms
- Two Reception Rooms
- Eat-In Kitchen
- Two Bathrooms
- Three Floors
- Private Rear Garden

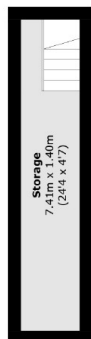




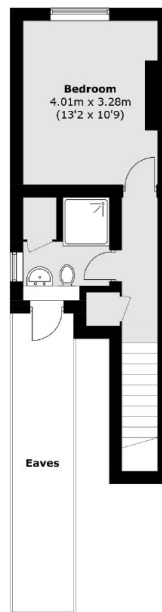




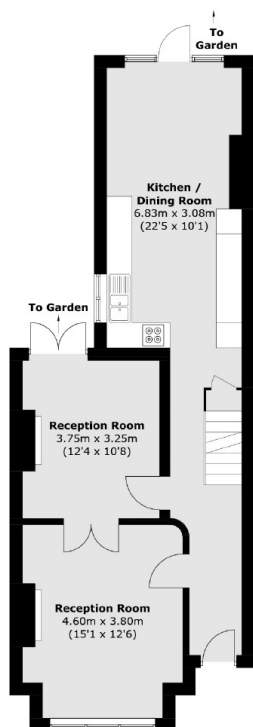
# Helix Road, London, SW2



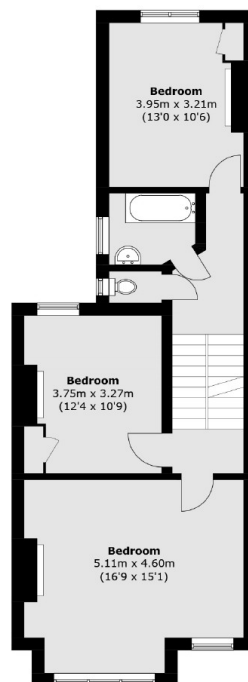
Cellar



Second Floor



Ground Floor



First Floor

Total area (approx.): 164.3 sq. m (1,768.4 sq. ft)  
(Excluding Eaves)