



## Voltaire Road, SW4

### £425,000

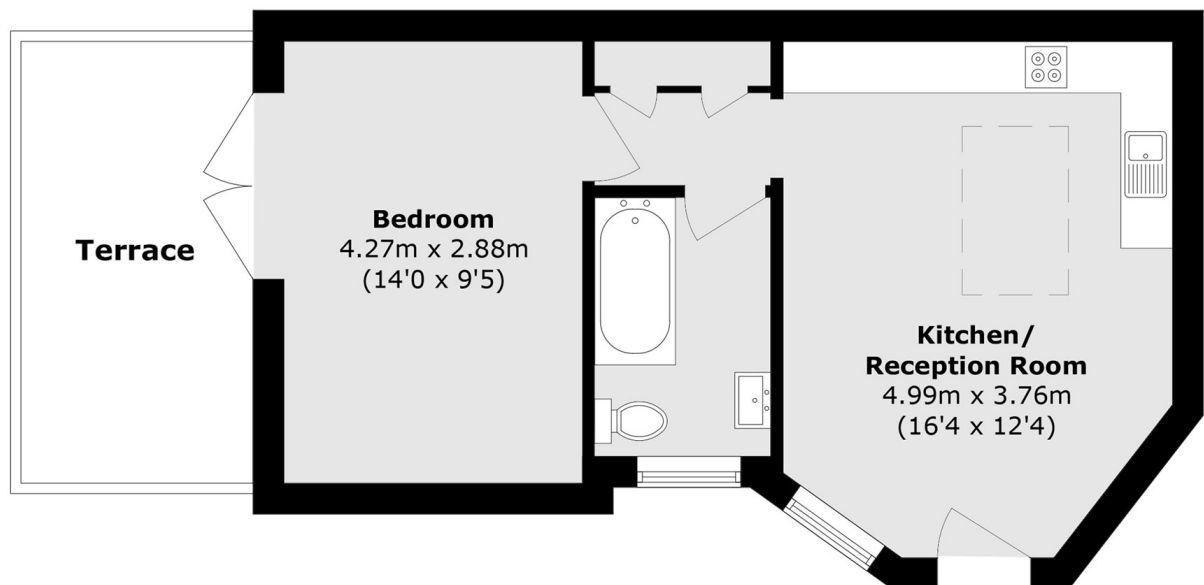
Situated on the top floor of a charming period building on Voltaire Road, this bright one bedroom apartment benefits from a rare private, demised roof terrace. The property offers approximately 403 sq. Ft. Of well-designed accommodation, including an open-plan kitchen/reception room with skylight, a double bedroom with direct terrace access, and a modern bathroom. Finished to a high standard throughout, the apartment also benefits from wooden flooring and air conditioning, with the roof terrace offering impressive rooftop views across Clapham.

Voltaire Road is on the doorstep of Clapham High Street Overground Station and Clapham North Underground Station (Northern Line), Stockwell Underground Station (Victoria Line) a short distance away. Numerous bus routes and the Super Cycle Highway that run through central.

### Features

Private Terrace  
One Double Bedroom  
Top Floor  
Superb Location

Voltaire Road,  
London, SW4



Total area (approx.): 37.5 sq. m (403.6 sq. ft)  
Terrace area (approx.): 9.56 sq. m (102.9 sq. ft)

**Dexters**

Clapham High Street  
55 Clapham High Street  
London  
SW4 7TG  
Sales  
020 7483 6363

Energy Rating: C. We aim to make our particulars both accurate and reliable. However they are not guaranteed; nor do they form part of an offer or contract. If you require clarification on any points then please contact us, especially if you're traveling some distance to view. Please note that appliances and heating systems have not been tested and therefore no warranties can be given as to their good working order.

 **RICS** | Regulated  
Estate Agent  
and Letting Agent

dexters.co.uk