



Ballater Road, SW2
£625,000

Dexters



Ballater Road, SW2

A well presented two double bedroom, split level ground floor period conversion located on Ballater Road, benefiting from a south west-facing private garden and a share of the freehold. The accommodation comprises a spacious principal bedroom with fitted wardrobes arranged over the upper level, a second double bedroom with built-in storage and direct access to the rear garden, a high spec, recently refurbished bathroom, and an open-plan kitchen/living/dining area positioned at the front of the property. Further benefits include a cellar providing excellent additional storage. The property will be sold chain free.

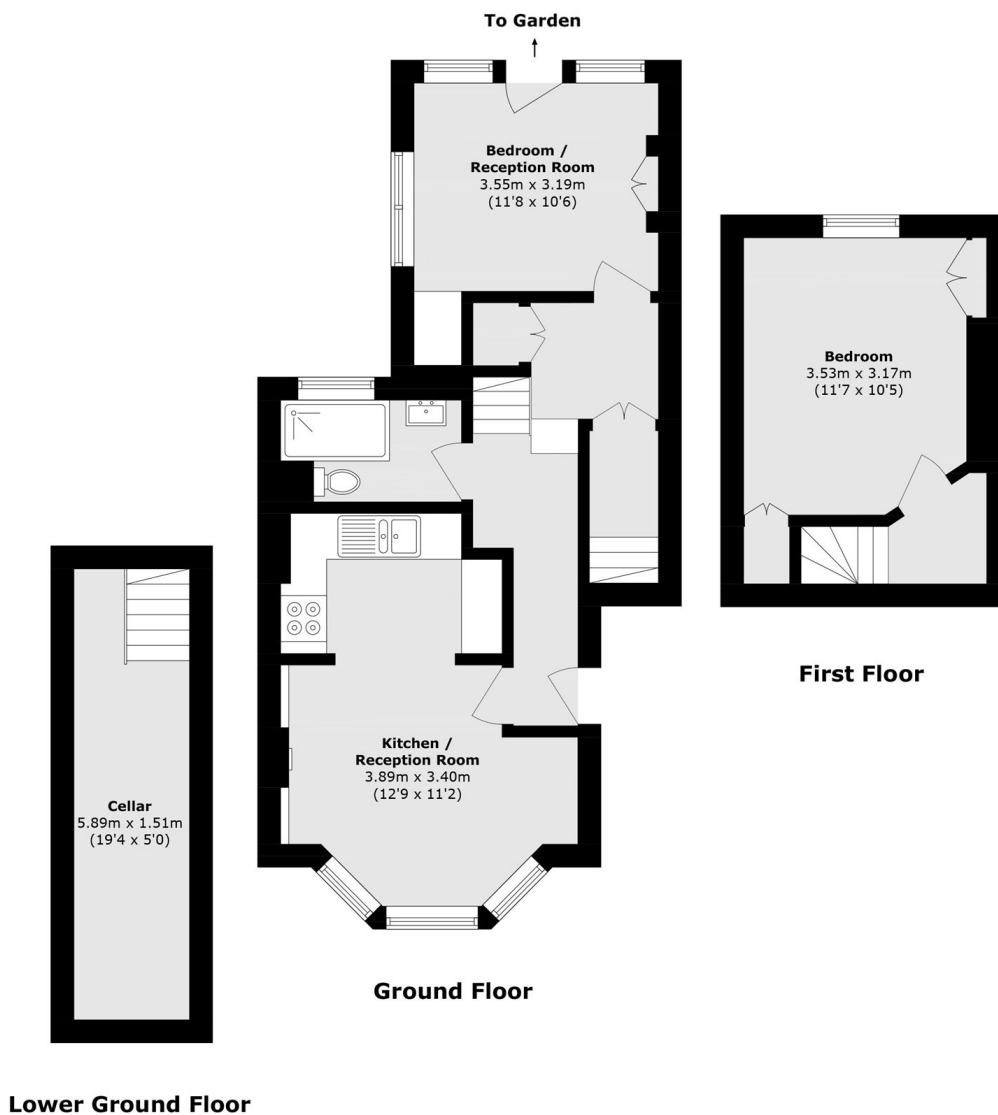
Ballater Road is a quiet residential street nestled in between Clapham and Brixton, falling within easy reach of many local amenities. Nearby transport links include the Northern Line along with the Victoria Line & Overground Services.

Features

- Two Double Bedrooms
- Split Level
- Open Plan Reception Room
- Share of Freehold
- Private Garden



Ballater Road, London, SW2



Total area (approx.): 63.1 sq. m (679.2 sq. ft)