



Atherfold Road, SW9

£2,200 Per calendar month

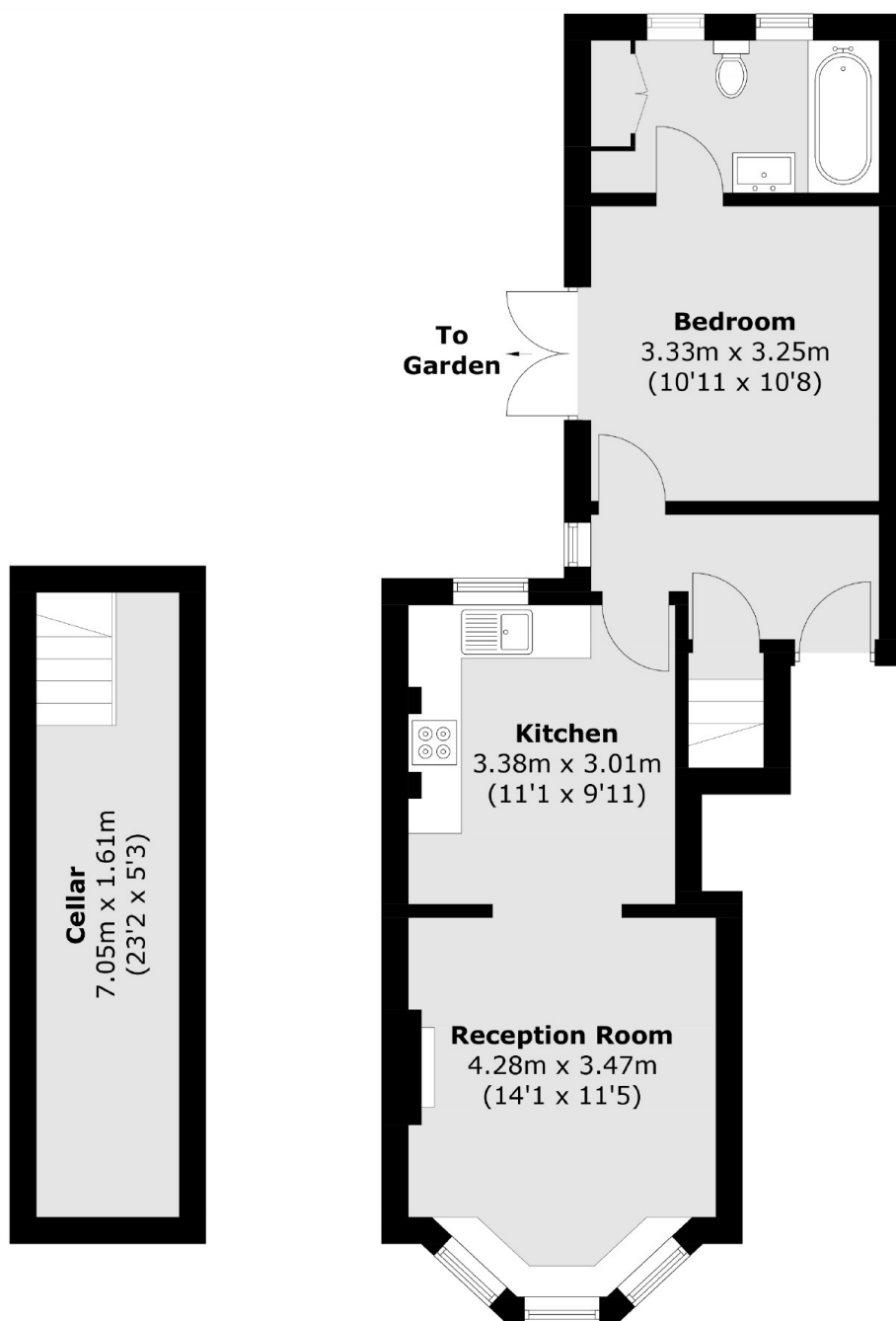
Set on the ground floor, this one bedroom garden flat offers a semi open plan reception room and kitchen with space for dining, wooden flooring and original features throughout. Ideal for a professional couple.

Ideally located not even half a miles walk from both Clapham North tube and Clapham High Street with its many shops, bars and restaurants.

Features

- One Double Bedroom
- Open Plan Reception
- Eat-In Kitchen
- Wooden Flooring
- Private Garden
- Close To Transport

Atherfold Road, London, SW9



Cellar

Ground Floor

Total area (approx.): 58.8 sq. m (632.9 sq. ft)