

## Slievemore Close, SW4

£599,999

An immaculately presented three bedroom, two bathroom apartment on the first floor of a stunning Georgian building set within a private gated close off Clapham High Street.

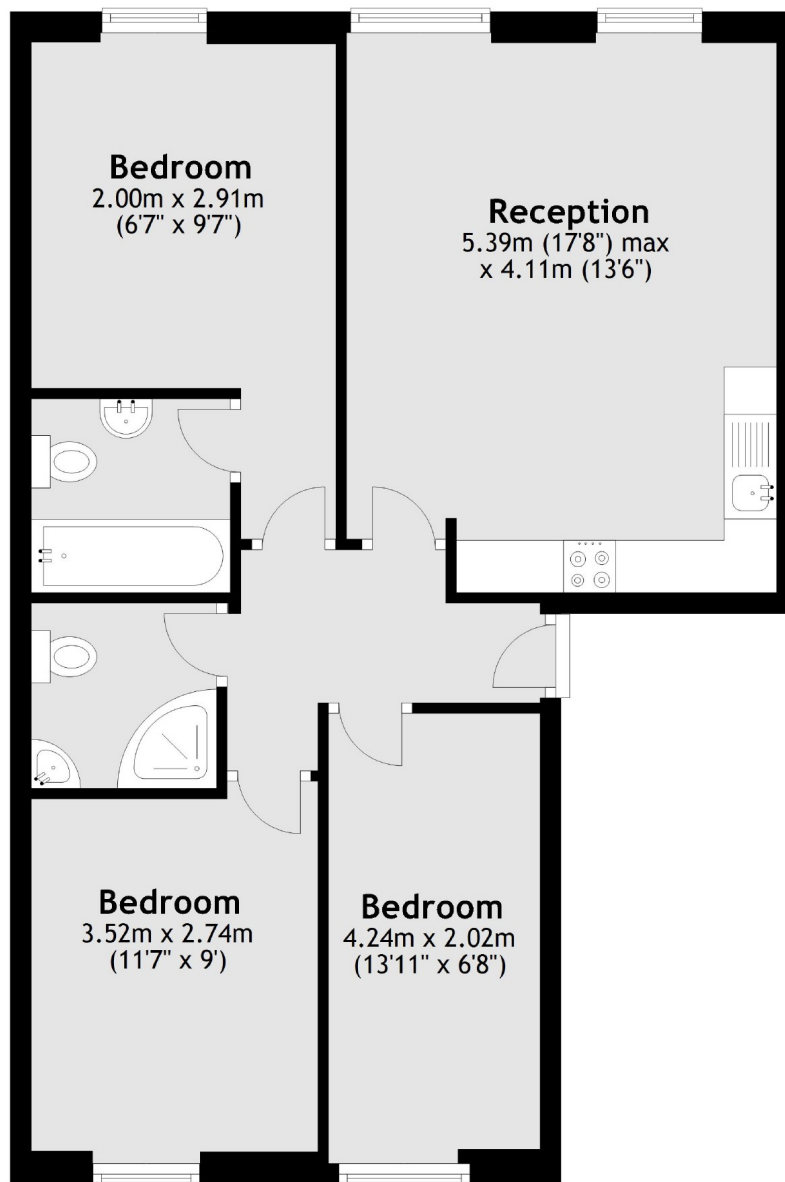
Slievemore Close is tucked off Voltaire Road which is a quiet residential street ideally located moments from Clapham High Street and the amenities of Clapham Old Town. Local transport links include Clapham North Underground Station (Northern Line) and Clapham High Street British Rail Station (direct to Victoria and

### Features

- Three Bedrooms
- Two Allocated, Gated Parking Spaces
- Two Bathrooms
- Communal Gardens
- Off Street Parking
- Leasehold

## Slievemore Close, London, SW4

### First Floor



Total area: approx. 64.6 sq. metres (695.2 sq. feet)

#### Contact

To arrange a viewing call our office on the number below or visit our website.



Energy Rating: C. We aim to make our particulars both accurate and reliable. However they are not guaranteed; nor do they form part of an offer or contract. If you require clarification on any points then please contact us, especially if you're traveling some distance to view. Please note that appliances and heating systems have not been tested and therefore no warranties can be given as to their good working order.