



Kellett Road, SW2

£2,400 Per calendar month

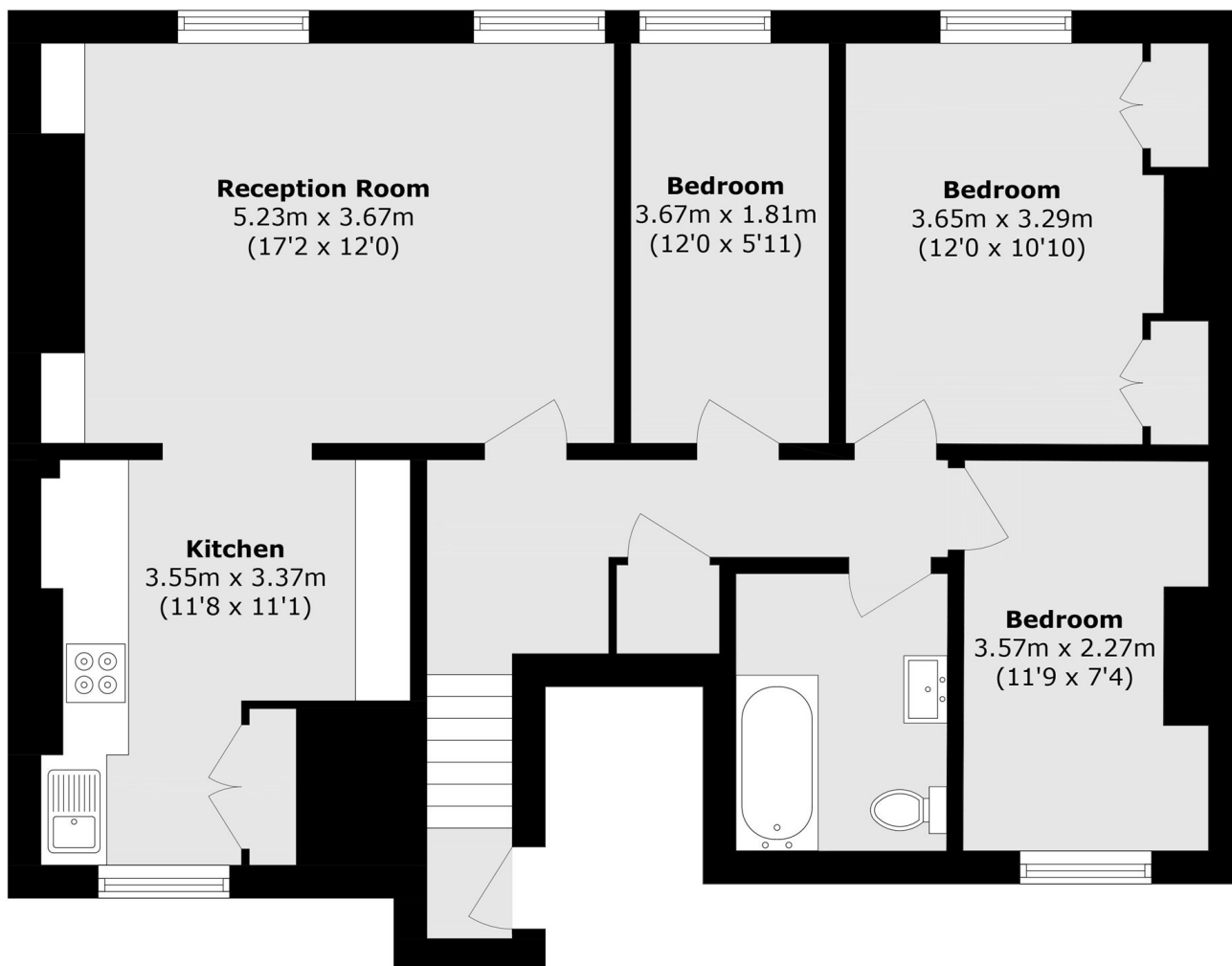
A beautifully arranged three double bedroom flat on one of Brixton's most sought-after streets. The apartment is neutrally decorated throughout and ready to move into immediately.

Kellett Road is well known for its attractive homes and its close proximity to the shops, restaurants and bars of central Brixton. Brockwell Park and the station (Victoria line and National rail) are also just a walk away.

Features

- Three Double Bedrooms
- Top Floor Flat
- Spacious Reception Room
- Modern Kitchen
- Wooden Flooring
- Close To Transport

Kellett Road, London, SW2



Total area (approx.): 75.9 sq. m (816.9 sq. ft)