



Ostade Road, SW2

£2,500 Per calendar month

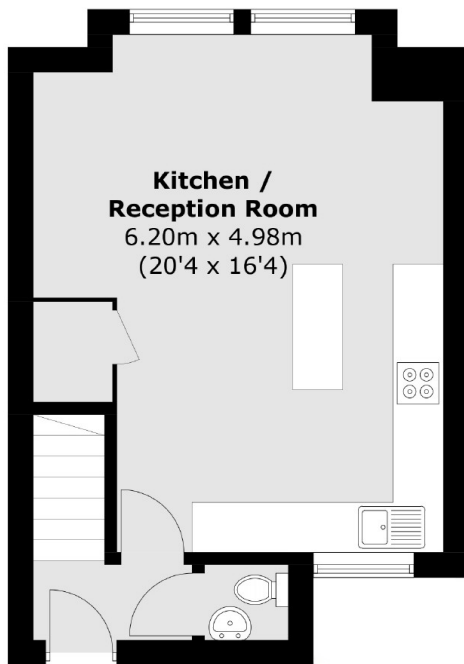
Arranged over two floors, this two bedroom property offers an attractive open plan reception room with large, floor to ceiling windows, wooden flooring and a modern kitchen with a breakfast bar.

A residential street located between Brixton Hill and Streatham Hill. With access to amenities, including the green open spaces of Brockwell Park and Brixton Station.

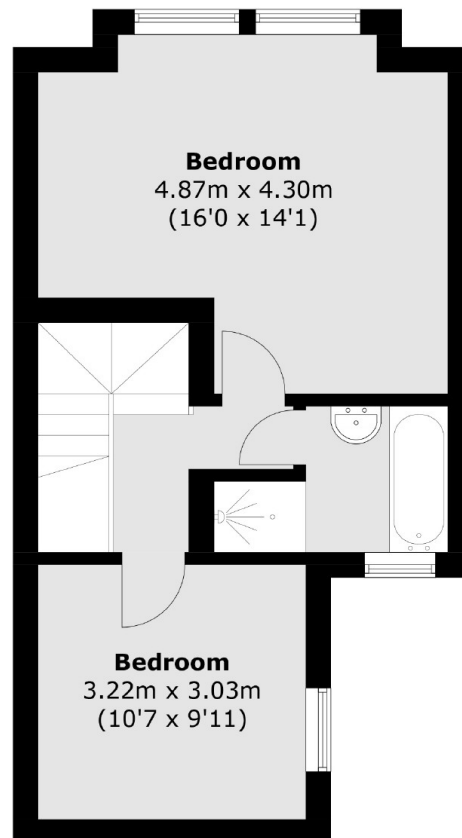
Features

- Two Double Bedrooms
- Open Plan Reception
- Modern Kitchen
- Wooden Flooring
- Split-Level Flat
- Close To Amenities

Ostade Road,
London, SW2



First Floor



Second Floor

Total area (approx.): 72.4 sq. m (779.3 sq. ft)

Dexters

Clapham High Street
55 Clapham High Street
London
SW4 7TG
Lettings
020 7483 6364

Energy Rating: . We aim to make our particulars both accurate and reliable. However they are not guaranteed; nor do they form part of an offer or contract. If you require clarification on any points then please contact us, especially if you're traveling some distance to view. Please note that appliances and heating systems have not been tested and therefore no warranties can be given as to their good working order.

 **RICS** | Regulated
Estate Agent
and Letting Agent

dexters.co.uk