



Lyham Road, SW2

£4,000 Per week

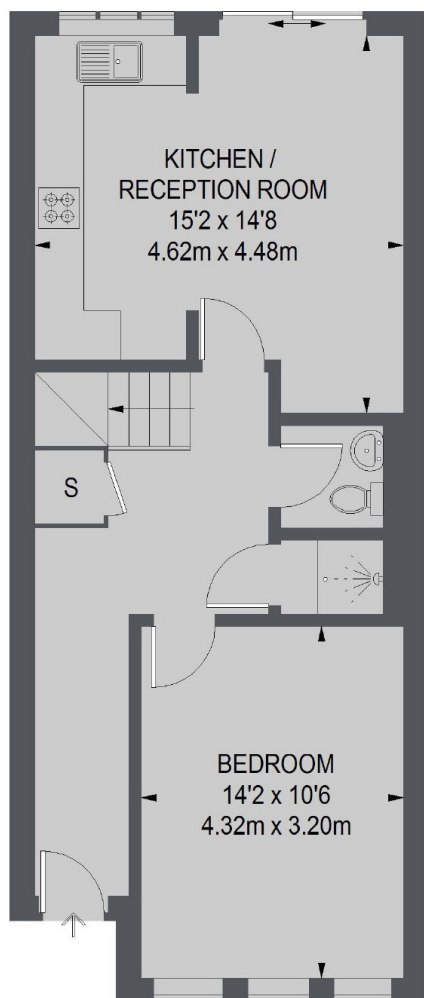
A large four double bedroom house with equal sized bedrooms, open plan reception with modern kitchen leading on to a private patio garden. The property has been recently decorated through out.

Lyham Road is within easy walking distance of Brixton Village and Clapham High Street, with Abbeville Village just around the corner.

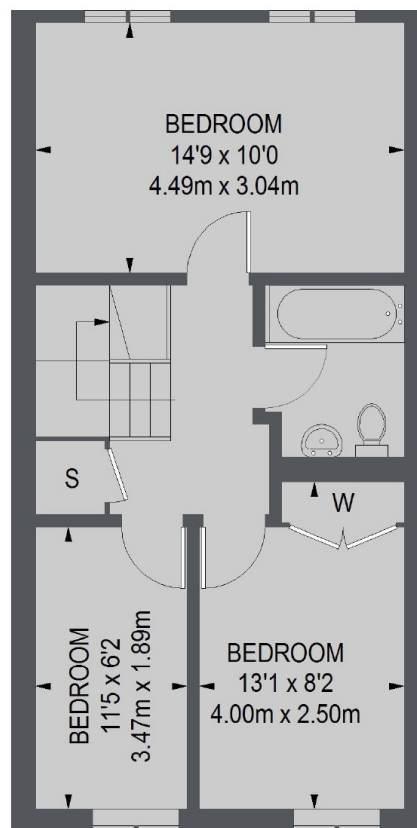
Features

- Four Bedroom House
- Two Bathrooms
- Open Plan Kitchen
- Private Patio Garden
- Private Driveway
- Recently decorated

Lyham Road, London, SW2



GROUND FLOOR



FIRST FLOOR

TOTAL APPROX. FLOOR AREA
1014 SQ. FT. (94.18 SQ. M.)