



Bedford Road, SW4

£2,200 Per calendar month

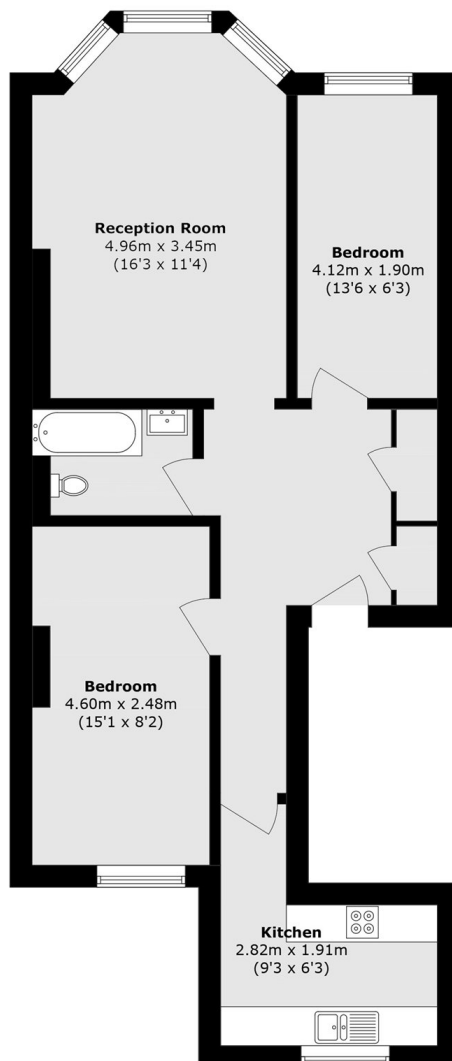
This first floor flat offers two double bedrooms, a large reception room, a kitchen with ample storage, a modern bathroom, wooden flooring and neutral interior throughout. Perfect for professional sharers or a couple looking for more space.

With Clapham High Street's bars and restaurants around the corner and easy access to the City via transport links nearby, Bedford Road is an ideal location for young professionals.

Features

- Two Double Bedrooms
- First Floor Flat
- Large Reception Room
- Modern Bathroom
- Ideal Location
- Ample Storage

Bedford Road, London, SW4



Total area (approx.): 58.2 sq. m (626.4 sq. ft)

Dexters

Clapham High Street
55 Clapham High Street
London
SW4 7TG
Lettings
020 7483 6364

Energy Rating: D. We aim to make our particulars both accurate and reliable. However they are not guaranteed; nor do they form part of an offer or contract. If you require clarification on any points then please contact us, especially if you're traveling some distance to view. Please note that appliances and heating systems have not been tested and therefore no warranties can be given as to their good working order.

 **RICS** | Regulated
Estate Agent
and Letting Agent

[dexters.co.uk](https://www.dexters.co.uk)