



Concanon Road, SW2

£2,100 Per calendar month

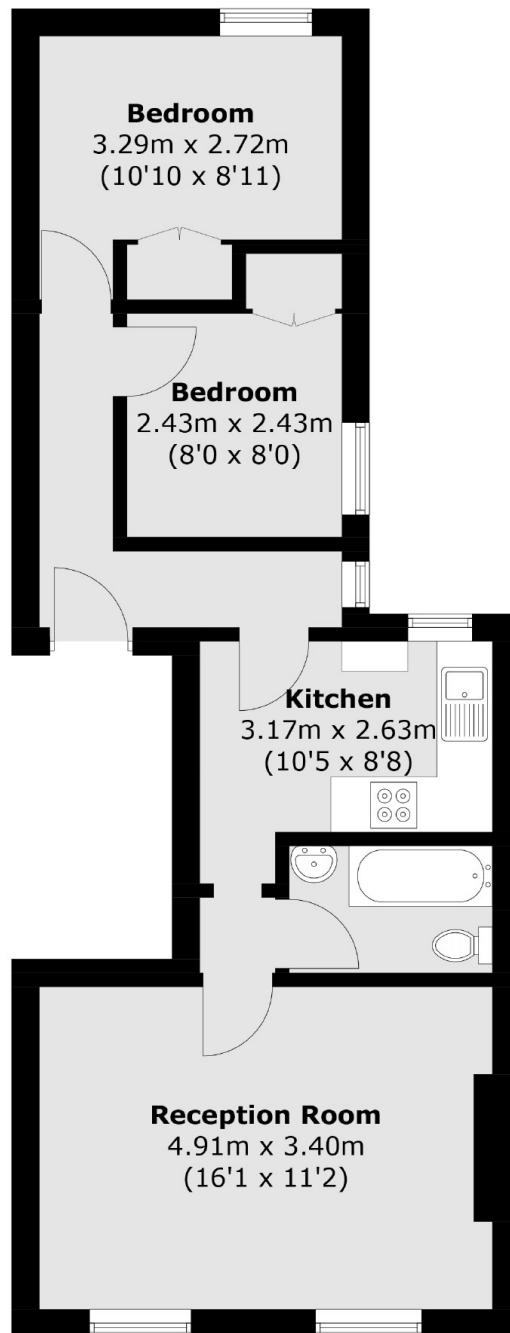
Situated on the first floor of a Victorian conversion, this property comes with two bedrooms, a generous reception room and a modern kitchen. Ideal for professional sharers or a couple.

Nestled between Clapham High Street and Brixton Town Centre, Concanon Road provides access to two of South London's most popular destinations.

Features

- Two Double Bedrooms
- Large Reception
- Local To Amenities
- Modern Kitchen
- Close To Transport
- Prime Location

Concanon Road,
London, SW2



Total area (approx.): 50.5 sq. m (543.6 sq. ft)

Dexters

Clapham High Street
55 Clapham High Street
London
SW4 7TG
Lettings
020 7483 6364

Energy Rating: D. We aim to make our particulars both accurate and reliable. However they are not guaranteed; nor do they form part of an offer or contract. If you require clarification on any points then please contact us, especially if you're traveling some distance to view. Please note that appliances and heating systems have not been tested and therefore no warranties can be given as to their good working order.

 **RICS** | Regulated
Estate Agent
and Letting Agent

[dexters.co.uk](https://www.dexters.co.uk)