



## Kings Avenue, SW4

£2,350 Per calendar month

A fully renovated period maisonette in the heart of Clapham. The property offers two double bedrooms, a modern open plan reception room with kitchen and breakfast bar, as well as ample storage throughout.

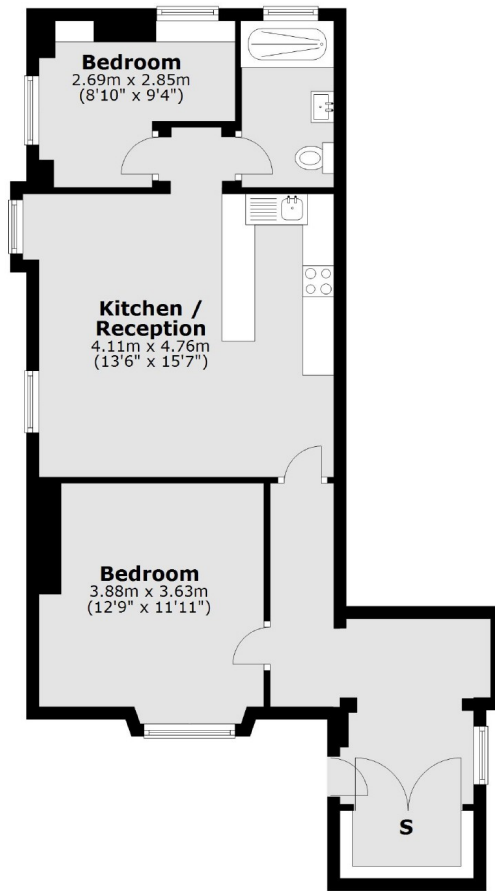
Located at the Clapham end of Kings Avenue, set just behind Abbeville Village with its many boutique shops, restaurants and cafés. With Clapham Common underground nearby.

### Features

- Two Double Bedrooms
- Open Plan Reception
- Eat-In Kitchen
- Recently Renovated
- Ample Storage
- Desirable Location

# Kings Avenue, London, SW4

## Lower Ground Floor



Total area: approx. 63.0 sq. metres (677.9 sq. feet)