

## Haselrigge Road, SW4

**£4,400** Per calendar month

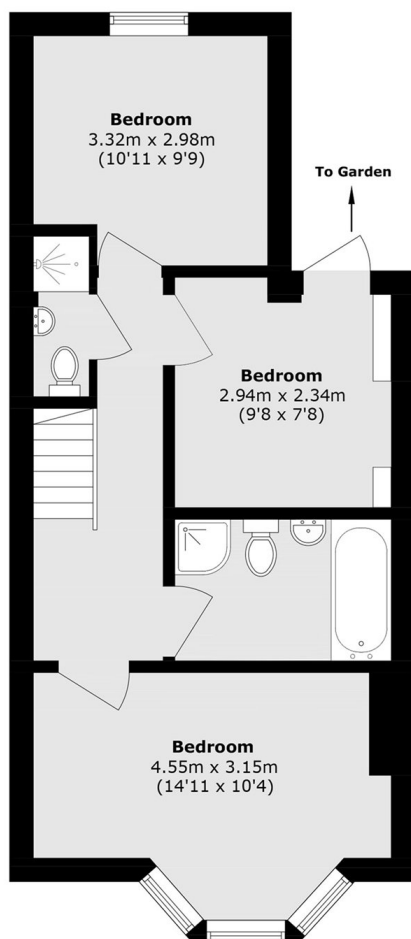
Split over two floors, this Victorian conversion flat has been fully refurbished throughout and offers an open plan reception room, modern kitchen, four double bedrooms, wooden flooring and a large private garden.

Located less than half a mile from many shops, bars and restaurants on Clapham High Street, with both Clapham North and Clapham Common underground stations.

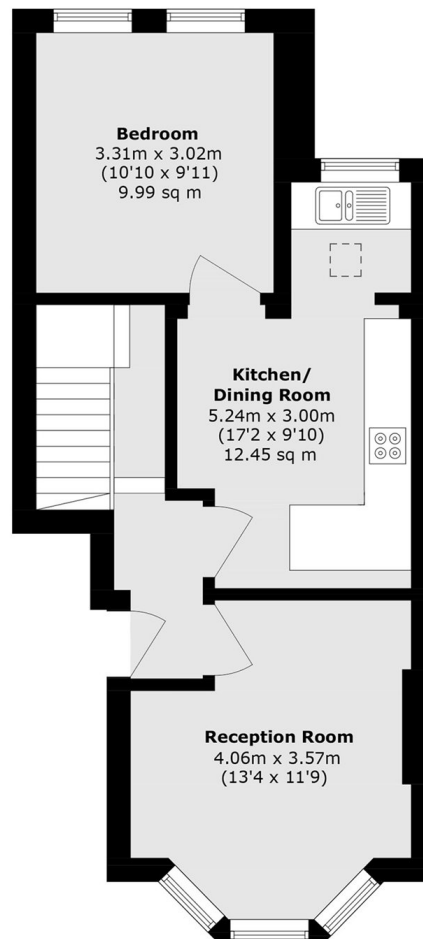
### Features

- Four Double Bedrooms
- Open Plan Reception
- Ground Floor Flat
- Split-Level
- Private Garden
- Prime Location

# Haselrigge Road, London, SW4



**Basement**



**Ground Floor**

Total area (approx.): 87.3 sq. m (939.6 sq. ft)