



Abbeville Road, SW4

£2,000 Per calendar month

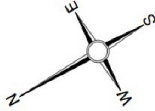
Set on the second floor, this modern one bedroom flat is ideal for a professional couple. Offering an open plan reception room and a modern kitchen, with space for dining.

Abbeville Road is located moments from the local shops, restaurants and cafés of the Abbeville Village. Clapham Common and Clapham South stations are within close proximity.

Features

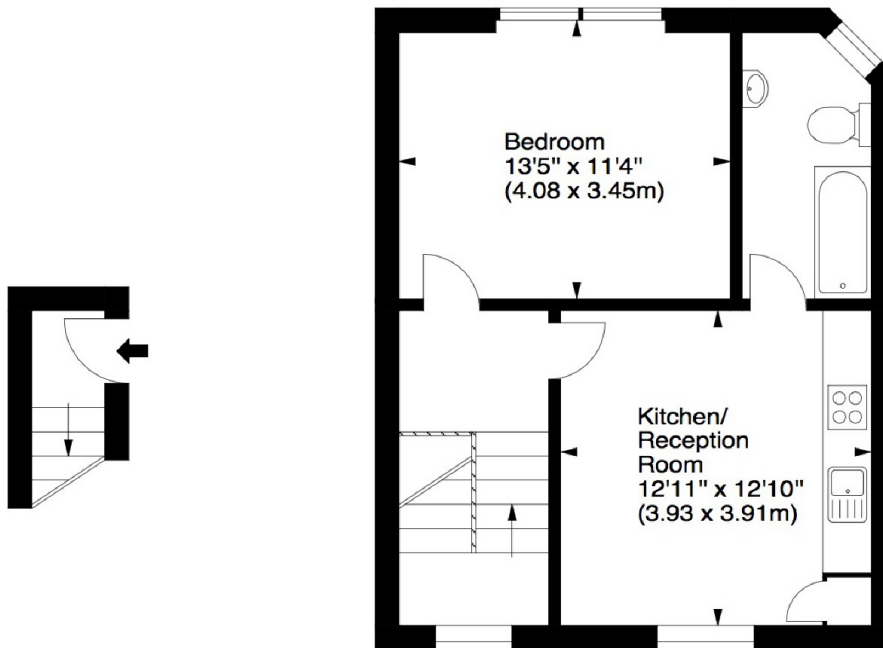
- One Double Bedroom
- Second Floor Flat
- Open Plan Reception
- Modern Kitchen
- Wooden Flooring
- Abbeville Village

Abbeville Road, London, SW4



Abbeville Road, SW4

Approx. Gross Internal Area
484 Sq Ft - 44.96 Sq M



First Floor
Entrance (1.87 sq m)

Second Floor (43.09 sq m)

For illustration purposes only. Not to scale.
All measurements are taken and shown at floor level.
www.r3photography.co.uk © Photography / Floor Plans / Lease Plans / EPCs

Dexters

Clapham South & Balham
9 Cavendish Parade
London
SW4 9DP
Lettings
0208 675 6750

Energy Rating: D. We aim to make our particulars both accurate and reliable. However they are not guaranteed; nor do they form part of an offer or contract. If you require clarification on any points then please contact us, especially if you're traveling some distance to view. Please note that appliances and heating systems have not been tested and therefore no warranties can be given as to their good working order.

 **RICS** | Regulated
Estate Agent
and Letting Agent

dexters.co.uk