



Elms Crescent, SW4

£5,500 Per calendar month

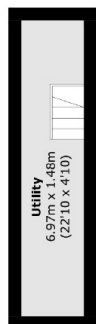
An exceptional five bedroom family home in the heart of Abbeville Village. This attractive property provides spacious living throughout. Offering five double bedrooms, a double reception room and a landscaped garden.

Elms Crescent is located in a residential area, within close walking distance the local cafés, restaurants and shops on Abbeville Road, as well as Clapham South tube station nearby.

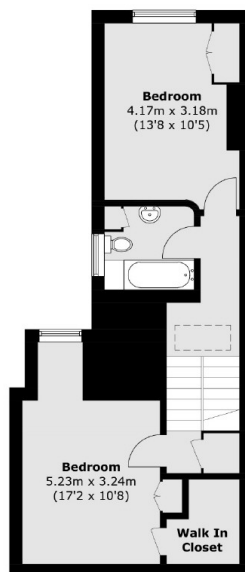
Features

- Five Double Bedrooms
- Two Bathrooms
- Double Reception Room
- Eat-In Kitchen
- Utility Room/Basement
- Private Garden

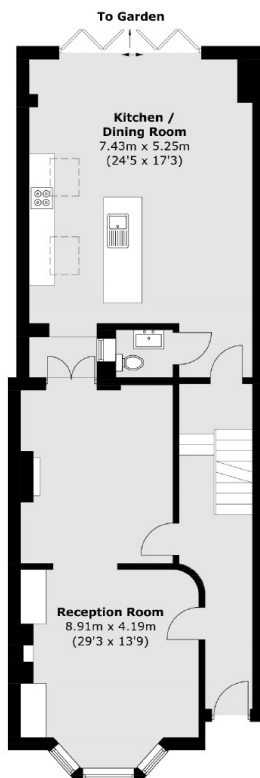
Elms Crescent, London, SW4



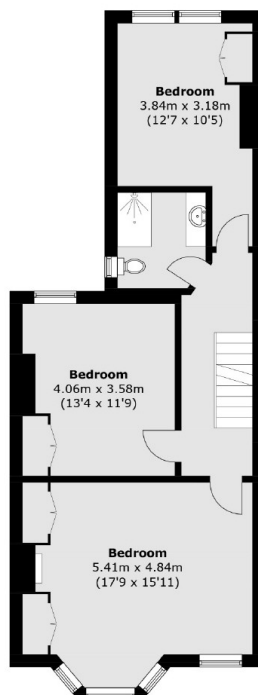
Cellar



Second Floor



Ground Floor



First Floor

Total area (approx.): 209.9 sq. m (2,259.2 sq. ft)
(Including Cellar / Excluding Void)

Dexters

Clapham South & Balham
9 Cavendish Parade
London
SW4 9DP
Lettings
0208 675 6750

Energy Rating: F. We aim to make our particulars both accurate and reliable. However they are not guaranteed; nor do they form part of an offer or contract. If you require clarification on any points then please contact us, especially if you're traveling some distance to view. Please note that appliances and heating systems have not been tested and therefore no warranties can be given as to their good working order.

 **RICS** | Regulated
Estate Agent
and Letting Agent

dexters.co.uk