



Cavendish Road, SW12

£4,000 Per calendar month

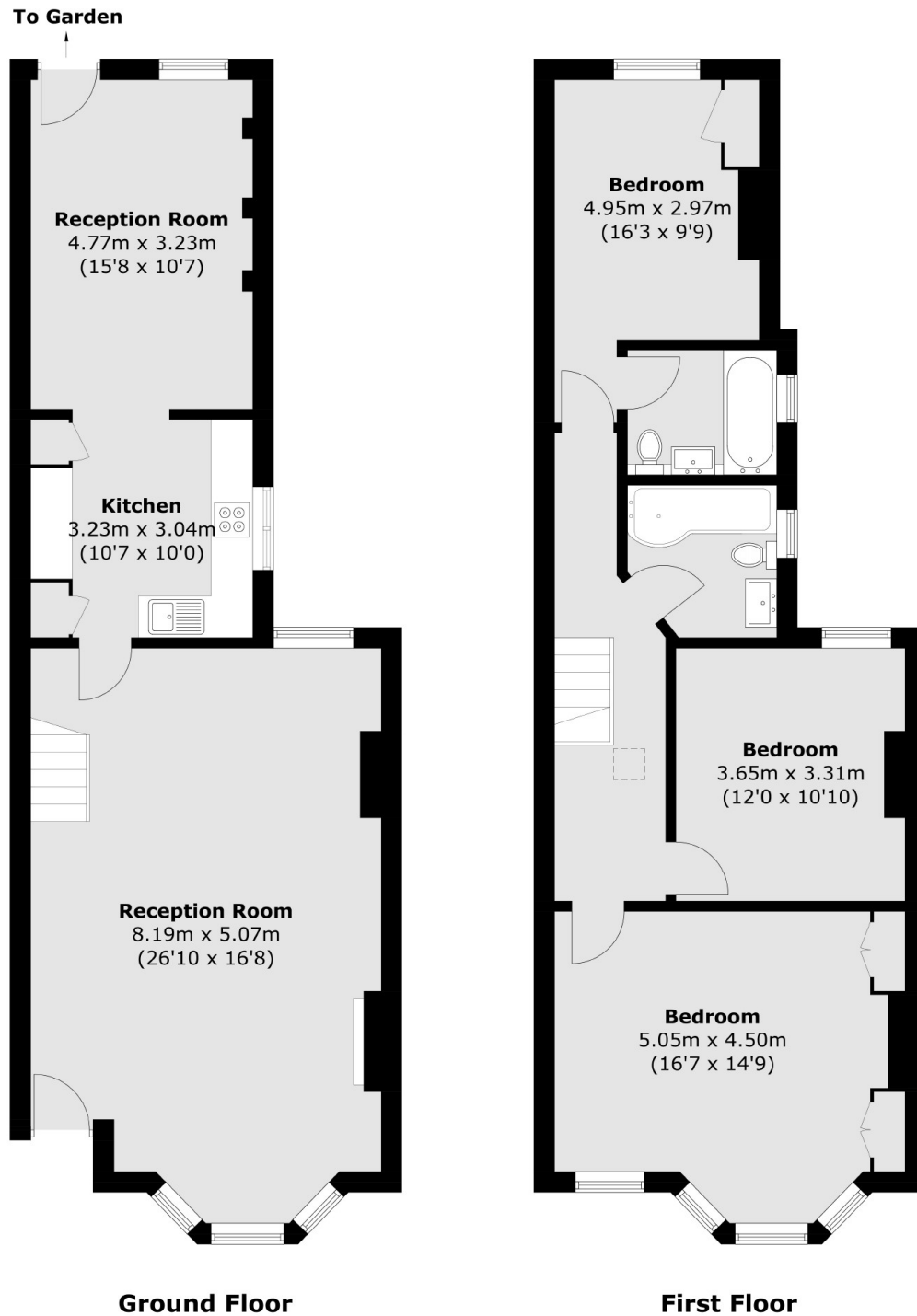
A well-presented three double bedroom Victorian house situated in the heart of Clapham South. The house is well-proportioned throughout and offers period features and a south facing garden.

Cavendish Road is ideally situated for the shops, bars and restaurants of Abbeville Village and Balham Hill. Clapham South station and Clapham Common are at the end of the Road.

Features

- Three Double Bedrooms
- Spacious Reception
- Integrated Kitchen
- Separate Dining Room
- Two Bathrooms
- South Facing Garden

Cavendish Road, London, SW12



Total area (approx.): 130.0 sq. m (1,399.3 sq. ft)

Dexters

Clapham South & Balham
9 Cavendish Parade
London
SW4 9DP
Lettings
0208 675 6750

Energy Rating: D. We aim to make our particulars both accurate and reliable. However they are not guaranteed; nor do they form part of an offer or contract. If you require clarification on any points then please contact us, especially if you're traveling some distance to view. Please note that appliances and heating systems have not been tested and therefore no warranties can be given as to their good working order.

 **RICS** | Regulated
Estate Agent
and Letting Agent

[dexters.co.uk](https://www.dexters.co.uk)