



Maud Chadburn Place, SW4

£1,800 Per calendar month

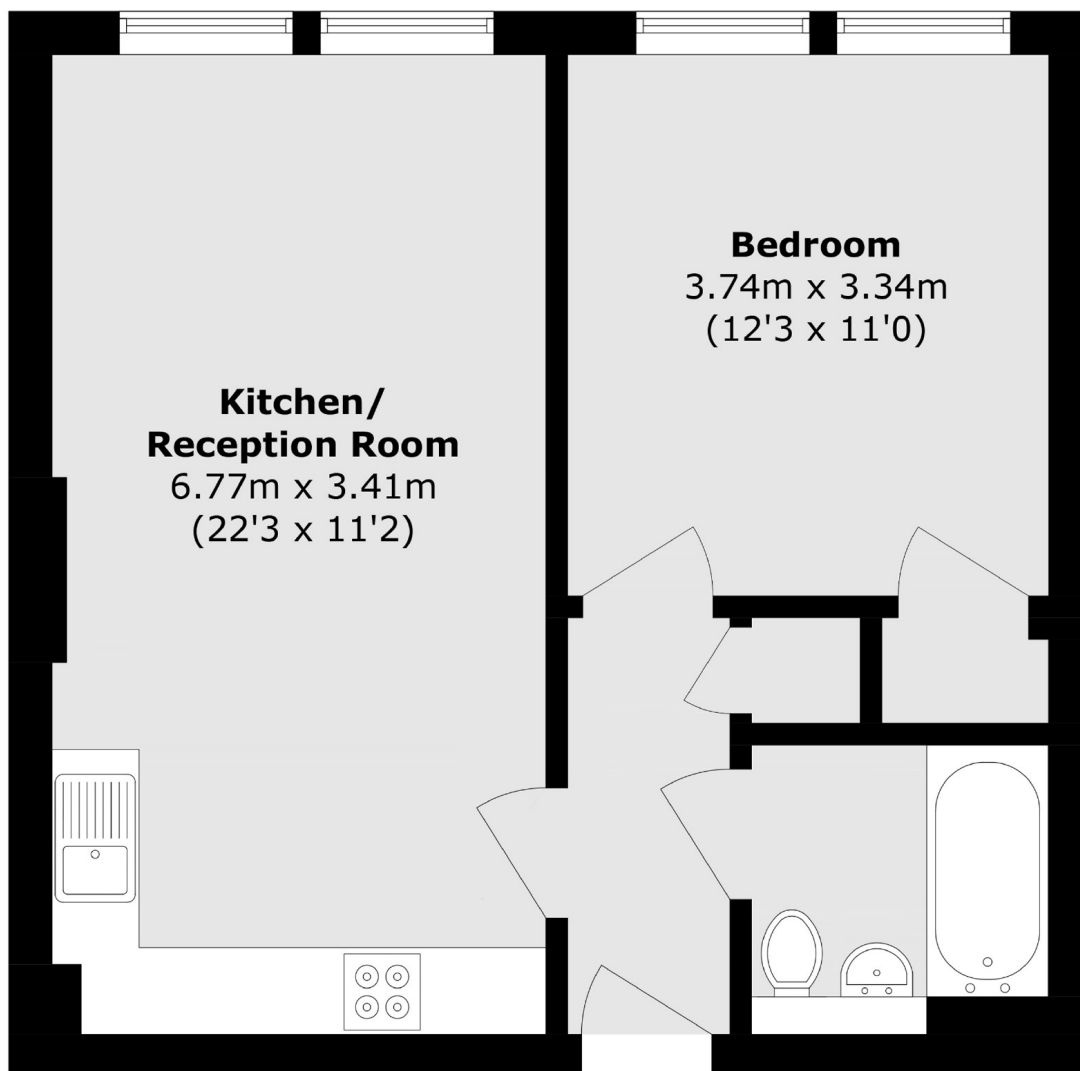
A spacious one double bedroom flat situated in a popular modern block. The property is well presented and comprises of a large open plan reception and kitchen, double bedroom and bathroom.

The property is located opposite Clapham South underground station (Northern Line) in the heart of Clapham which has numerous local amenities, pubs and restaurants.

Features

- One Bedroom Flat
- Open Plan Reception
- Contemporary Bathroom
- Well Equipped Kitchen
- Neutral Decor
- Great Location

Maud Chadburn Place, London, SW4



Total area (approx.): 46.5 sq. m (500.5 sq. ft)