



Hillgate Place, SW12

£3,000 Per calendar month

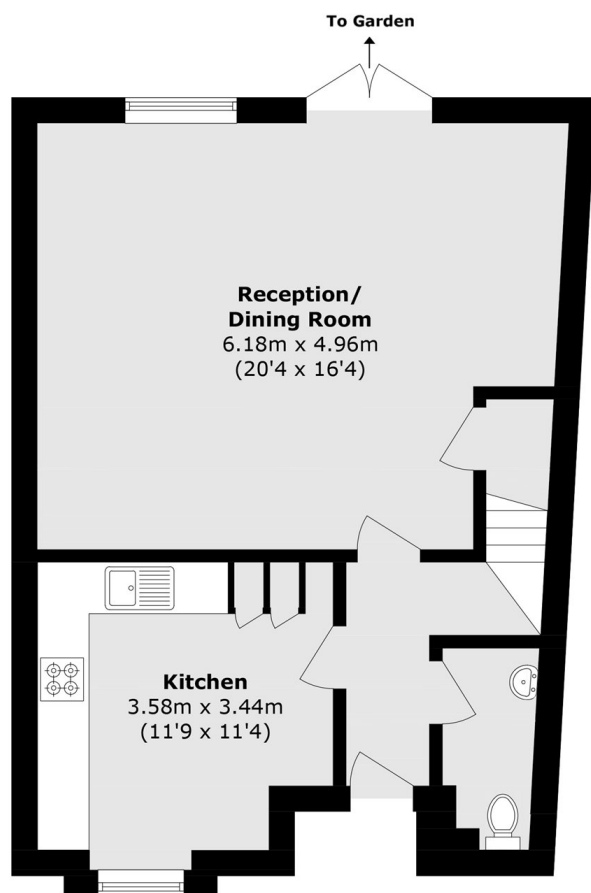
A split-level two bedroom mews house which is situated in a secure private development moments from Clapham Common South Side. The property is spacious and has been finished to a good standard throughout.

Hillgate Place is a quiet residential mews situated close to a fantastic range of shops, bars, restaurants of both Clapham south and Balham town centre.

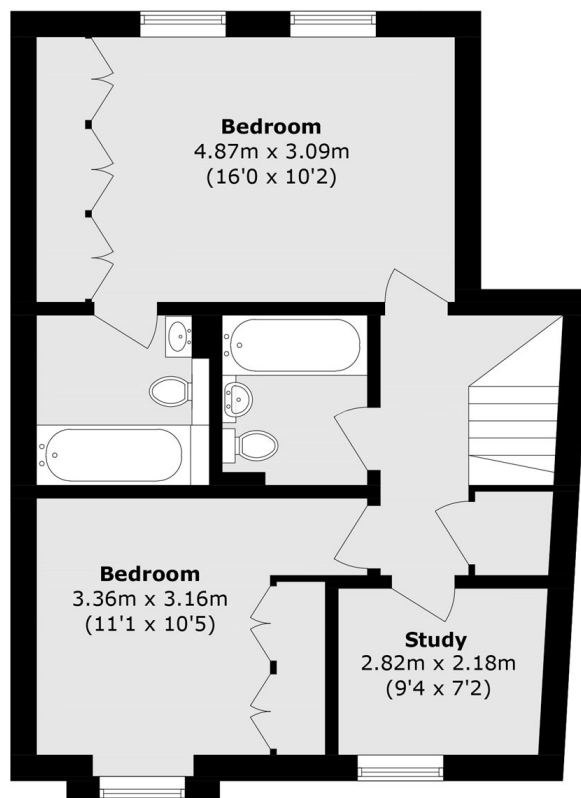
Features

- Mews House
- Private Development
- Two Double Bedrooms
- Two Bathrooms
- Built-In Storage
- Private Terrace

Hillgate Place, London, SW12



Ground Floor



First Floor

Total area (approx.): 95.8 sq. m (1031.3 sq. ft)