



## Nightingale Lane, SW12

£3,200 Per calendar month

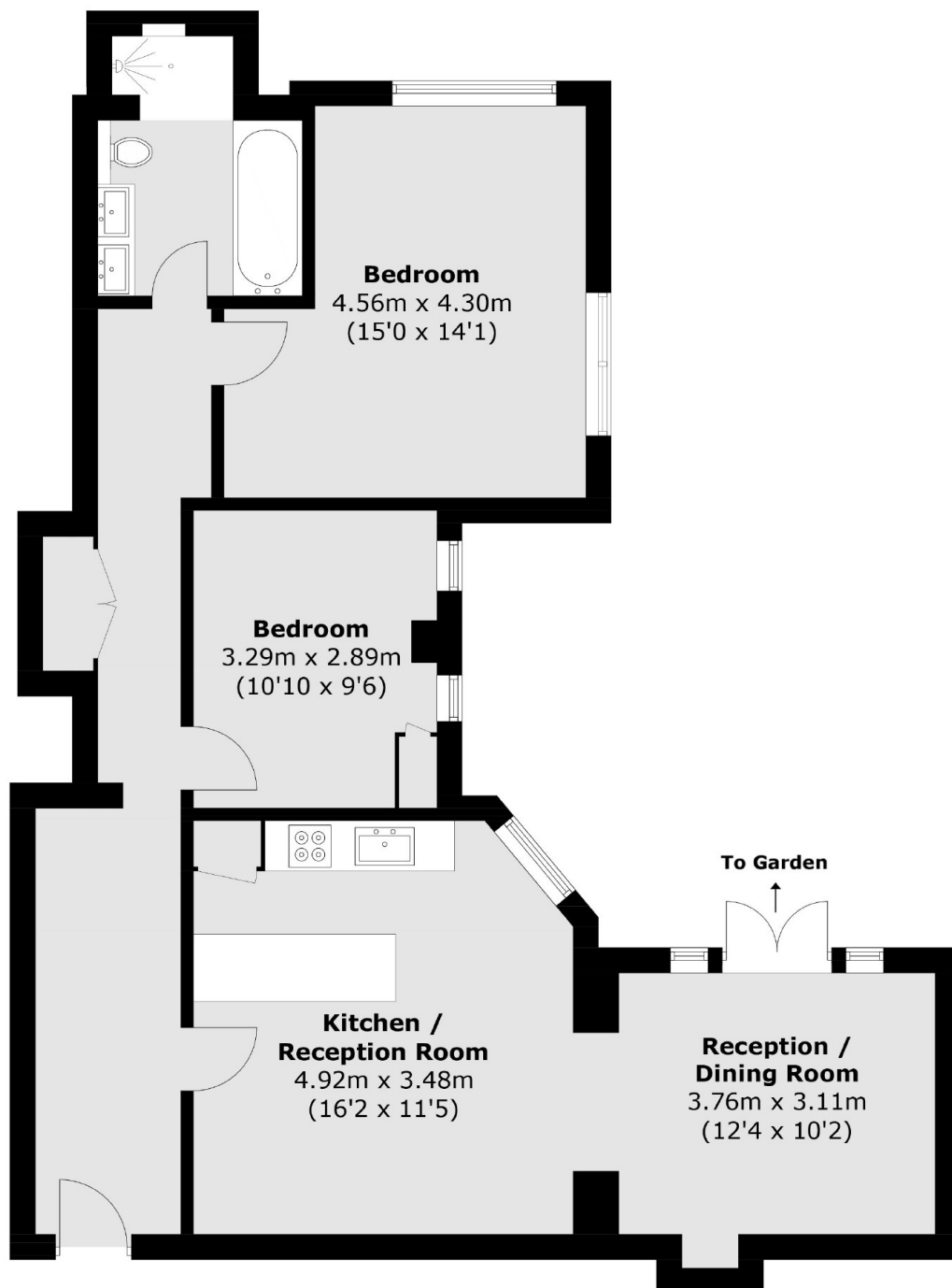
A well presented two double bedroom ground floor apartment set within the iconic Hightrees House building by Clapham Common & also moments from Clapham South tube station. The property further benefits from a concierge, residents swimming pool/gym, oversized communal roof terrace, private courtyard and allocated off street parking. The service charge includes hot water and heating.

This wonderful art deco building is located on Nightingale Lane between both Clapham and Wandsworth Commons, so enviably located for easy access to everything that the area has to offer from restaurants, bars, green open spaces and excellent transport links.

### Features

- Two Double Bedrooms
- Private Courtyard
- Allocated Parking
- Concierge
- Gym
- Swimming pool
- Roof terrace
- Communal Garden

# Nightingale Lane, London, SW12



Total area (approx.): 89.5 sq. m (963.4 sq. ft)