



Laitwood Road, SW12

£3,400 Per calendar month

A large three double bedroom, split-level conversion flat with a spacious reception room, modern kitchen with space for dining, two bathrooms and neutral Interior throughout. Ideal for professional sharers.

A residential road situated near to the centre of Balham with its many shops, bars, coffee shops, supermarkets and transport links. Tooting Bec Common is also close by.

Features

- Split-Level Flat
- Three Double Bedrooms
- Spacious Separate Reception
- Two Bathrooms
- Eat-In Kitchen
- Close To Tube



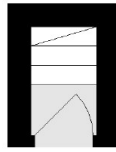
Laitwood Road, SW12

Set over two floors, the first floor consists of a large reception room with bay windows and feature fireplace, a double bedroom, family bathroom with shower over bath and an eat-in kitchen to the rear of the property.

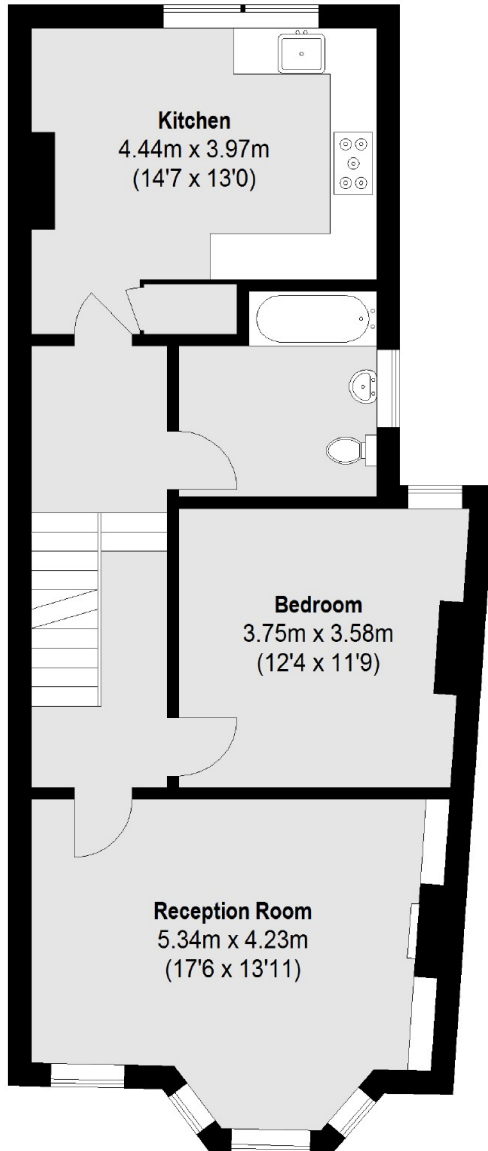
The second floor comes with a further two double bedrooms, both with storage space within the eaves and an en suite bathroom.



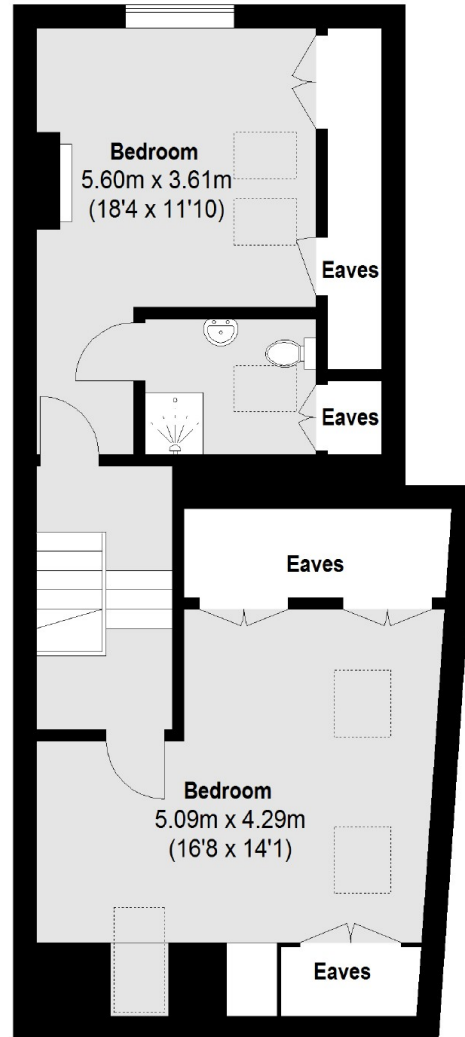
Laitwood Road, London, SW12



Ground Floor



First Floor



Second Floor

Total area (approx.): 115.77 sq. m (1246 Sq. ft) (Excluding Eaves)

Dexters

Clapham South & Balham
9 Cavendish Parade
London
SW4 9DP
Lettings
0208 675 6750

Energy Rating: C. We aim to make our particulars both accurate and reliable. However they are not guaranteed; nor do they form part of an offer or contract. If you require clarification on any points then please contact us, especially if you're traveling some distance to view. Please note that appliances and heating systems have not been tested and therefore no warranties can be given as to their good working order.

 **RICS** | Regulated
Estate Agent
and Letting Agent

dexters.co.uk