



Nevern Place, SW5

£761 Per week

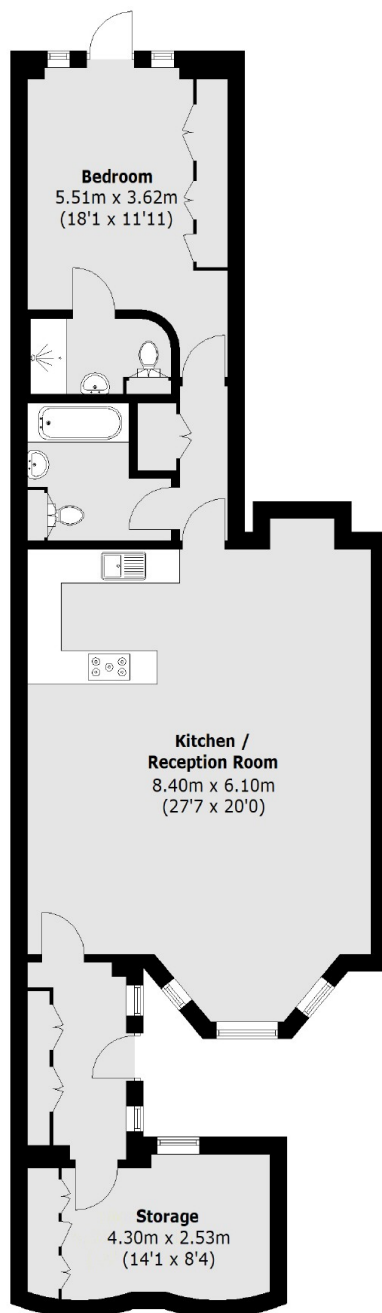
A large two double bedroom, two bathroom apartment on the lower ground floor of an impressive period building, with wood flooring throughout, built-in storage and a private patio.

The property is located close to all local amenities and transfer links of both Earls Court and Kensington with Earls Court tube station (Piccadilly and District lines) only 0.2 miles away.

Features

- Two Double Bedrooms
- Two Bathrooms
- Wood Flooring Throughout
- High Ceilings
- Private Patio
- 1,000 Sq Ft Plus

Nevern Place, London, SW5



Lower Ground Floor

Total area (approx.): 94.6 sq. m (1,018.3 sq. ft)