

Philbeach Gardens, SW5

£1,500 Per week

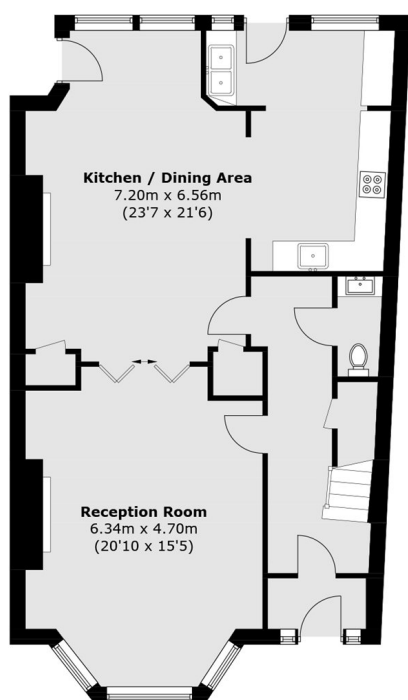
An elegant period six-bedroom residence situated on a tranquil residential street. Arranged over three floors, the property features wooden flooring throughout and benefits from a substantial private garden.

Philbeach Gardens is a tranquil one-way street located within the Royal Borough of Kensington and Chelsea. The location offers convenient access to the A4 and Heathrow Airport, while affording residents the benefits of a central London lifestyle, with an array of cafés, restaurants, and shops available in nearby Earl's Court and South Kensington.

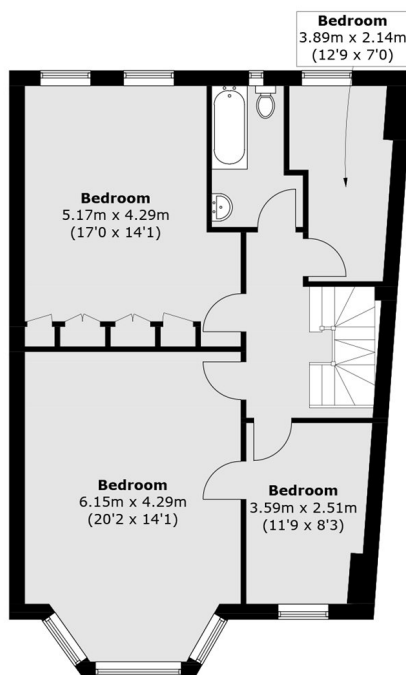
Features

- Six Bedrooms
- Two Bathrooms
- Garden
- Quiet Residential Street
- Wooden Floors
- Built In Storage

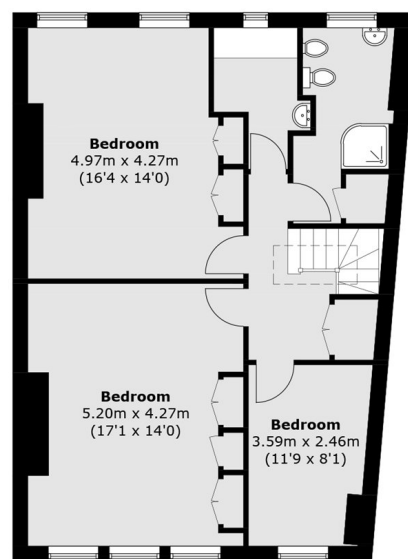
Philbeach Gardens, London, SW5



Ground Floor



First Floor



Second Floor

Total area (approx.): 232.0 sq. m (2,497.1 sq. ft)