



## Lexham Gardens, W8

£750 Per week

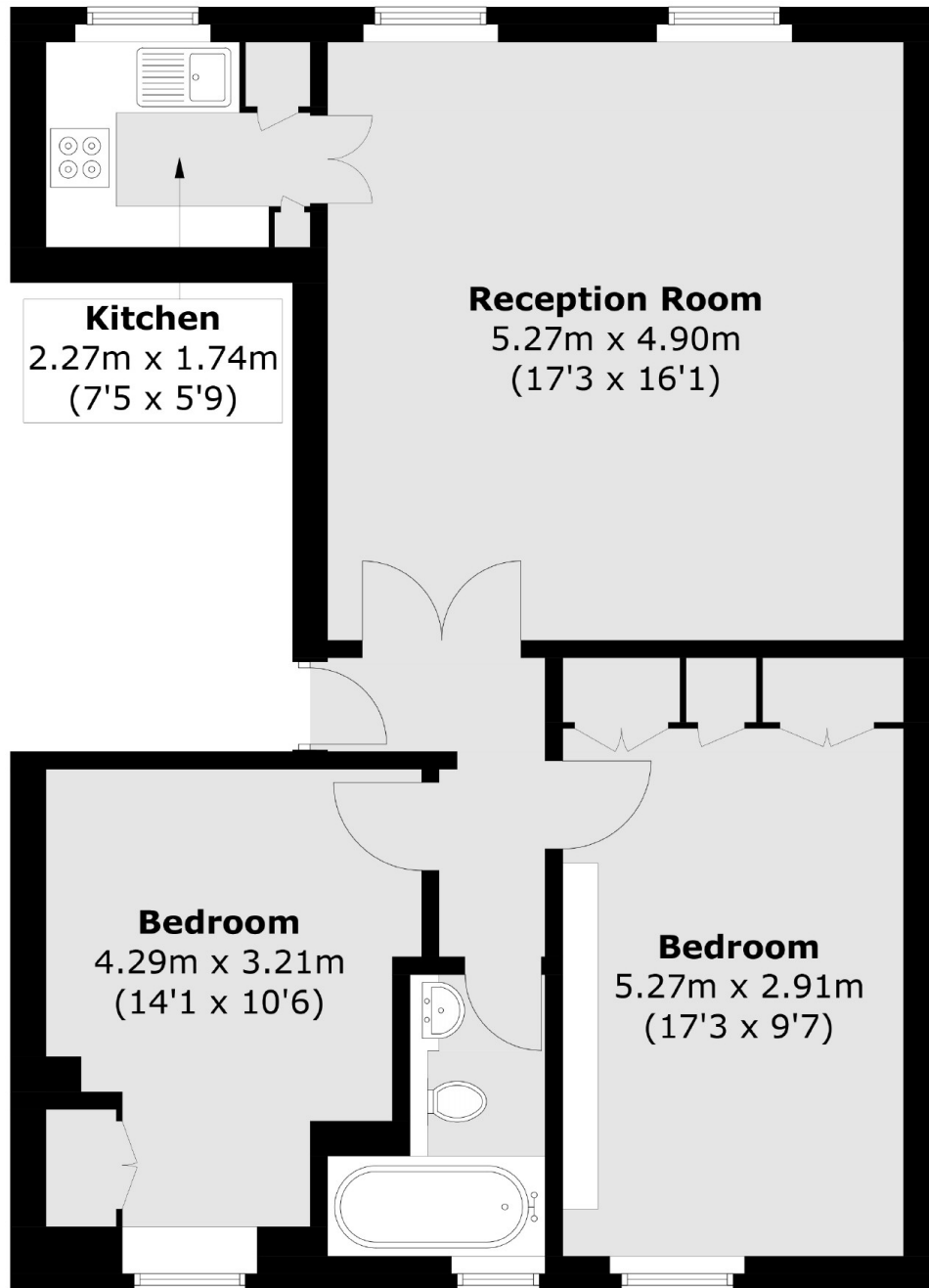
A bright and spacious two double bedroom flat on the third floor of this well maintained period conversion with high ceilings, plenty of storage and a feature fireplace.

Lexham Gardens is a popular residential street and is ideally located for the many local amenities of High Street Kensington, Gloucester Road and Earls Court.

### Features

- Two Bedrooms
- One Bathroom
- Built In Wardrobes
- Separate Kitchen
- South Facing
- Washer Dryer

# Lexham Gardens, London, W8



Total area (approx.): 64.4 sq. m (693.2 sq. ft)