



Philbeach Gardens, SW5

£750 Per week

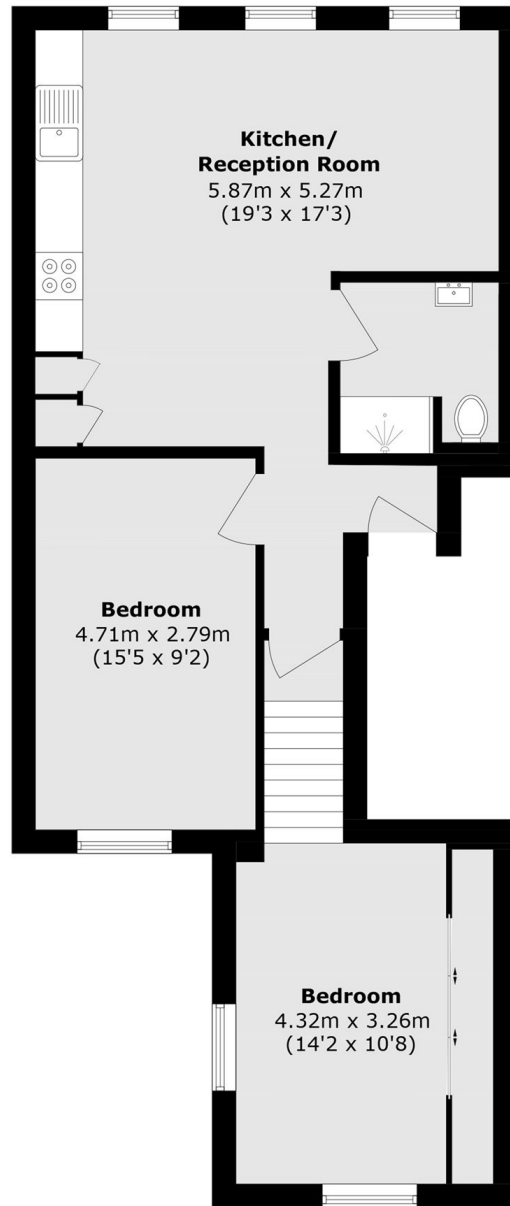
A beautifully represented two bedroom flat over looking Philbeach Gardens. The property has been recently renovated throughout and benefits from open plan living, natural light and access to Philbeach Gardens.

Located on a quiet one way street, Philbeach Gardens is close to all of the shops, restaurants and cafe's of Earl's Court whilst benefitting from being only 0.1 Miles from the tube station.

Features

- Two Bedrooms
- One Bathroom
- Recently Renovated
- Built in Storage
- Open Plan
- Communal Gardens

Philbeach Gardens, London, SW5



Third Floor

Total area (approx.): 65.6 sq. m (706.1 sq. ft)