



## Cromwell Road, SW5

£634 Per week

A spacious one bedroom apartment situated in a well maintained mansion block with lift access, a large reception room and separate kitchen.

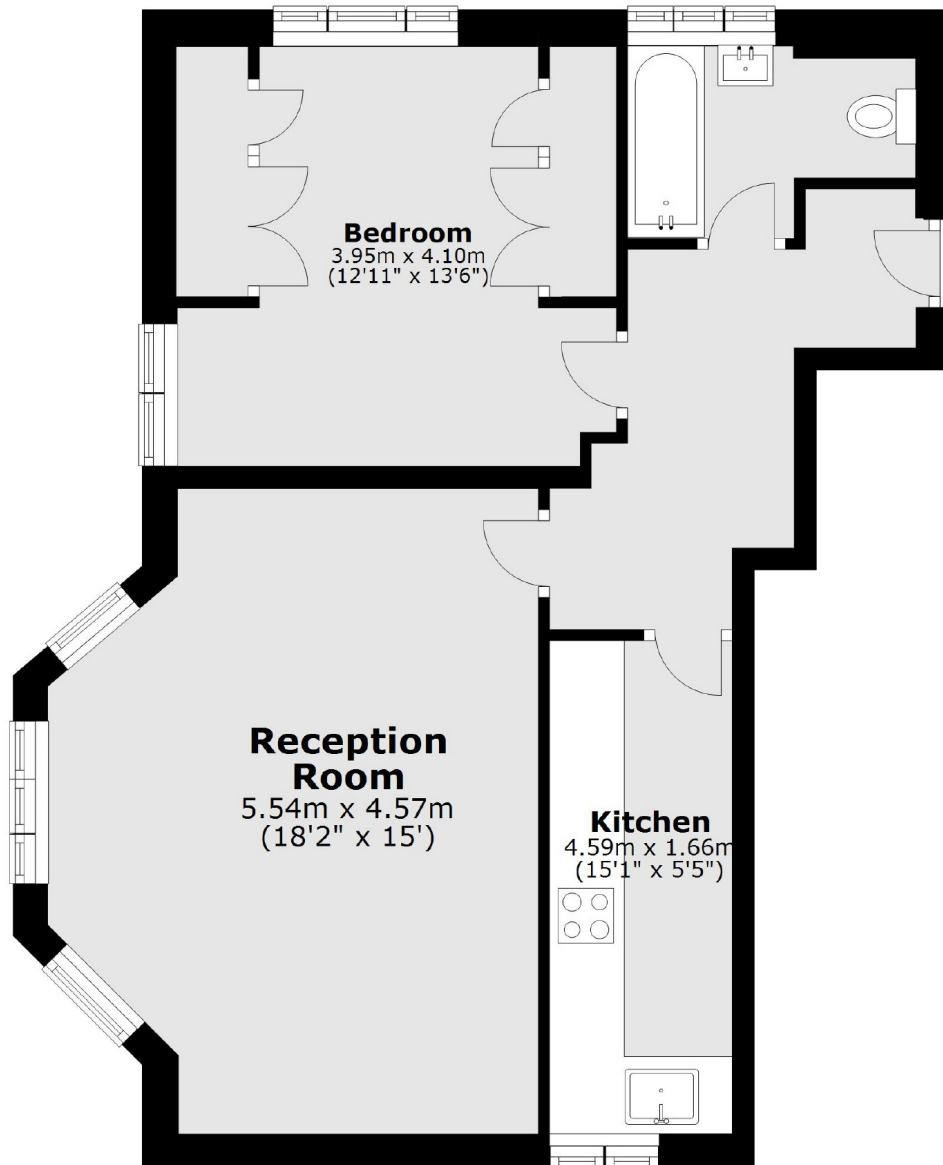
The property is a short distance to both Gloucester Road and Earls Court with a wide choice of Shops and cafés and bars, including Earl's Court station only 0.2 miles away.

### Features

Modern  
Separate Kitchen  
Spacious  
Fitted Wardrobes  
Gas Central Heating  
Lift

Cromwell Road,  
London, SW5

## Lower Ground Floor



Total area: approx. 62.0 sq. metres (667.4 sq. feet)