



Devonport Road, W12

£647 Per week

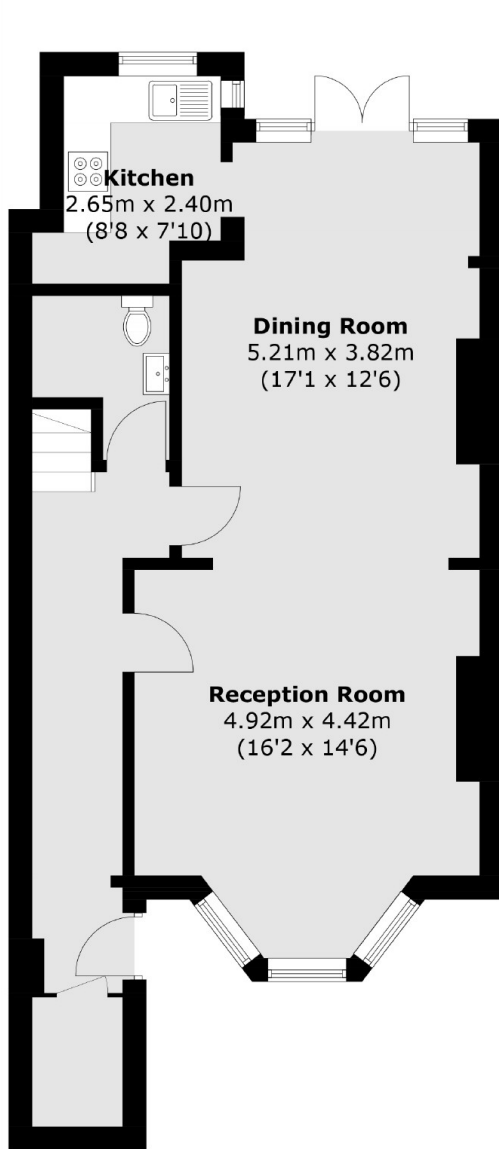
This stunning property is spread out over two floors within a Victorian conversion. Boasting a large living space with period features, separate fitted kitchen and direct access to a stunning garden and a downstairs W.C. On the upper floors you will find two large double bedrooms and a family size bathroom.

Devonport Road is located just off the south side of the Uxbridge road and enjoys a prominent position for access to Circle, Hammersmith & City and Central Lines tube access.

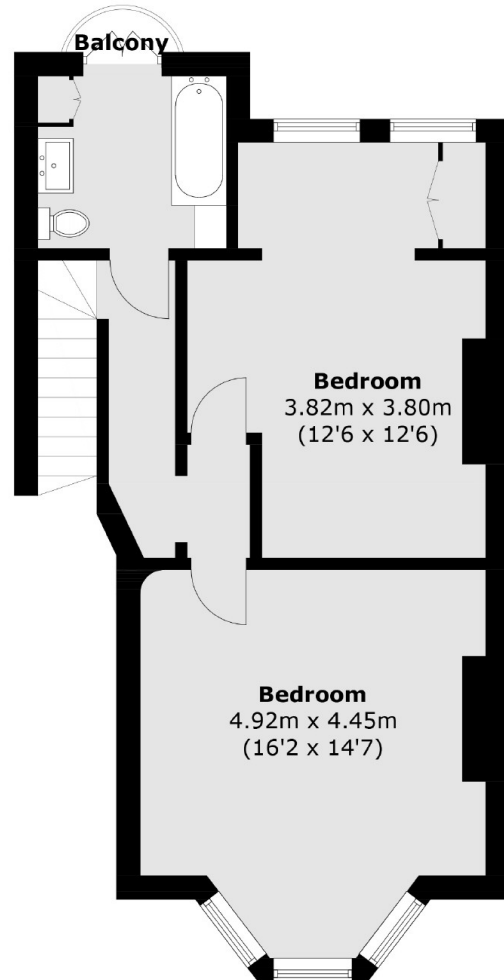
Features

- Victorian Conversion
- Large Living Space
- Two Double Bedrooms
- Bathroom With Balcony
- Split Level Garden
- Period Features

Devonport Road, London, W12



Lower Ground Floor



Ground Floor

Total area (approx.): 111.6 sq. m (1,201.2 sq. ft)