



## Goldhawk Road, W12

£335 Per week

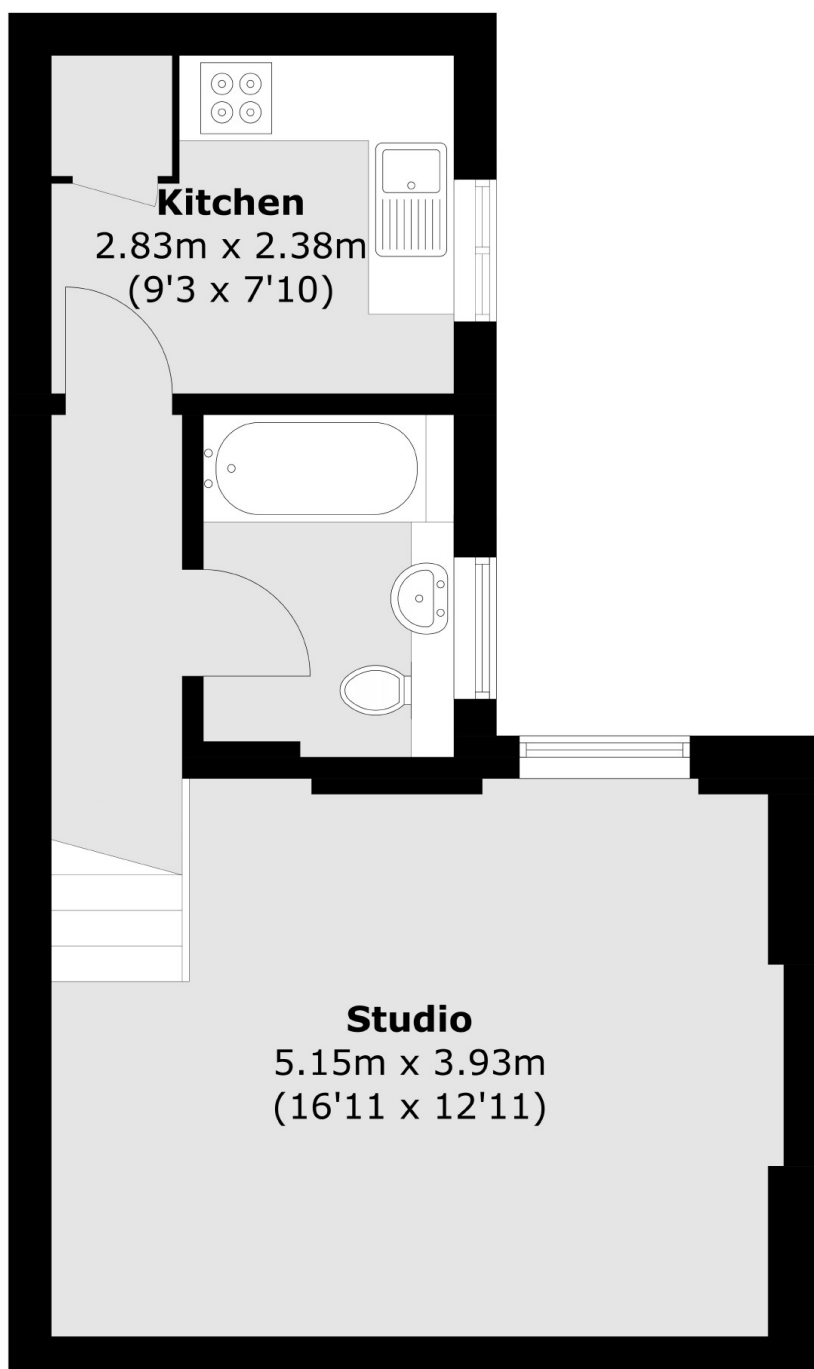
A large split level studio with separate kitchen and large bathroom centrally located in the heart of Shepherds Bush. The studio is ideal for a single or a couple that require good transport links to the city.

Market studios is located on Goldhawk Road with easy access to both Goldhawk Road Station and the famous Westfield Shopping Centre

### Features

- Large Studio
- Split-Level
- Separate Kitchen
- Central Location
- Ample Storage
- Bright And Spacious

# Goldhawk Road, London, W12



Total area (approx.): 34.6 sq. m (372.4 sq. ft)

## Dexters

Shepherds Bush and Brook Green  
53 Shepherds Bush Green  
London  
W12 8PS  
Lettings  
020 8723 8899

Energy Rating: C. We aim to make our particulars both accurate and reliable. However they are not guaranteed; nor do they form part of an offer or contract. If you require clarification on any points then please contact us, especially if you're traveling some distance to view. Please note that appliances and heating systems have not been tested and therefore no warranties can be given as to their good working order.

 **RICS** | Regulated  
Estate Agent  
and Letting Agent

[dexters.co.uk](https://www.dexters.co.uk)