

Sinclair Road, W14

£380,000

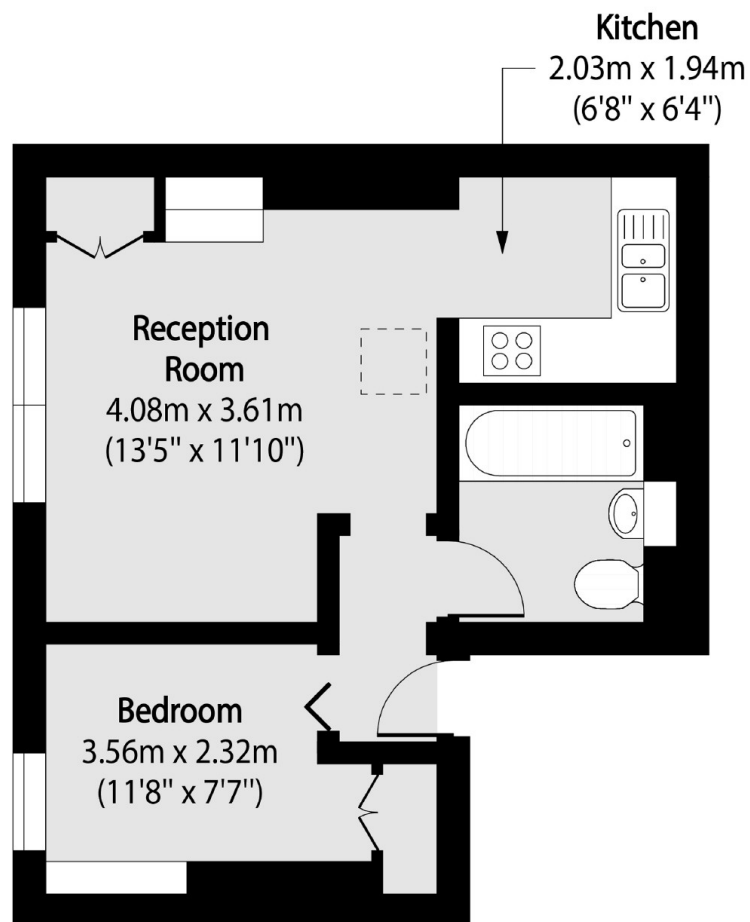
A beautiful one bedroom apartment in the heart of Brook Green. This property has an open plan kitchen and living space, double bedroom, modern bathroom, high ceilings and plenty of clever storage.

The property is located close to Brook Green, and the amenities of Westfield shopping centre, the Television Centre and Soho House within easy reach. The closest stations are to be found at Shepherds Bush - Central line and Overground; Kensington Olympia; and Goldhawk Road.

Features

- One Bedroom
- Victorian Conversion
- Open Plan Living
- Long Lease
- Brook Green
- Kensington Olympia

Sinclair Road, London, W14



First Floor

Total area (approx): 32.57 sq m (351 sq. ft)