



Shepherds Bush Green, W12

£310,000

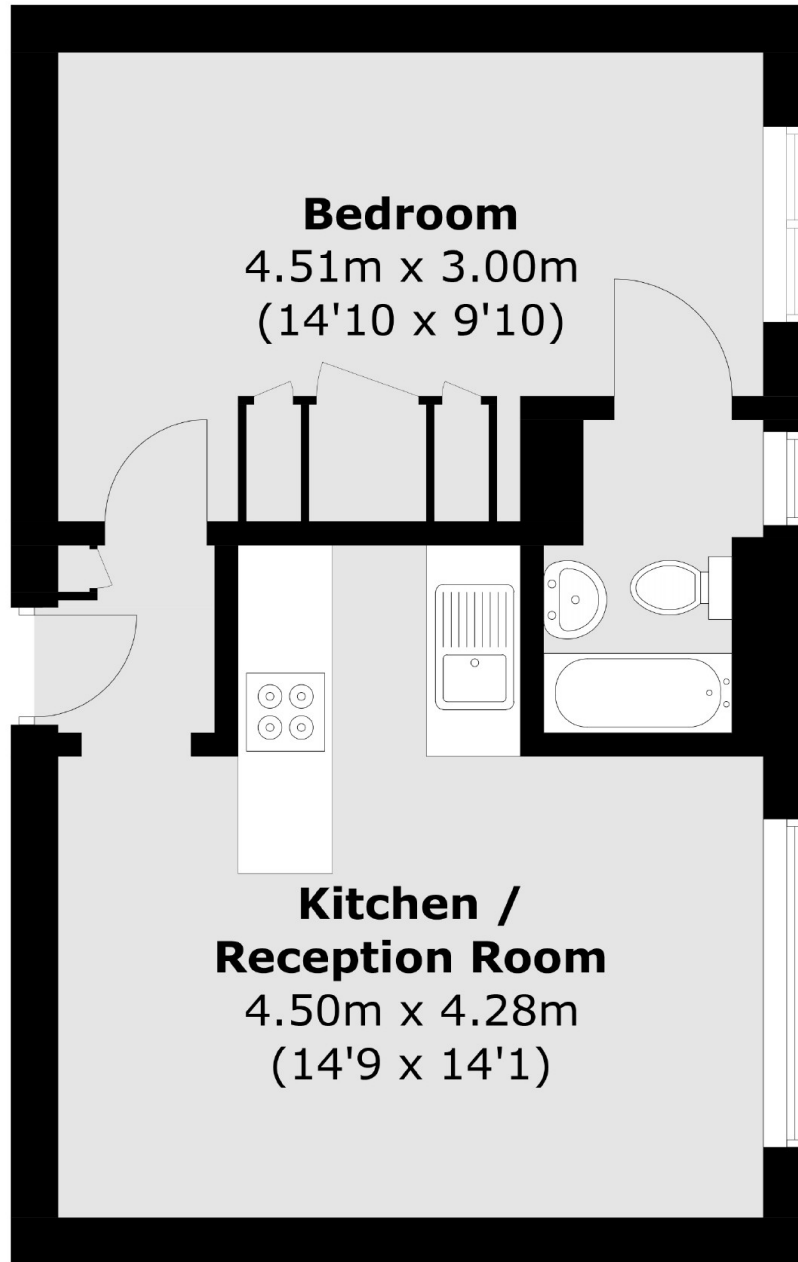
This well presented one bedroom flat in this purpose built block is West-facing and offers abundant natural light. The apartment has a good size open-plan reception room/kitchen, a double bedroom and has been meticulously cared for.

Centrally located in the heart of Shepherds Bush Green, this property is ideal for local transport links including Shepherds Bush station and the amenities of Westfield Shopping Centre.

Features

- Chain Free
- Long Lease
- Fifth Floor
- Lift Service
- West Facing
- Central Line

Shepherds Bush Green, London, W12



Total area (approx.): 33.6 sq. m (361.7 sq. ft)