



Frithville Gardens, W12

£600,000

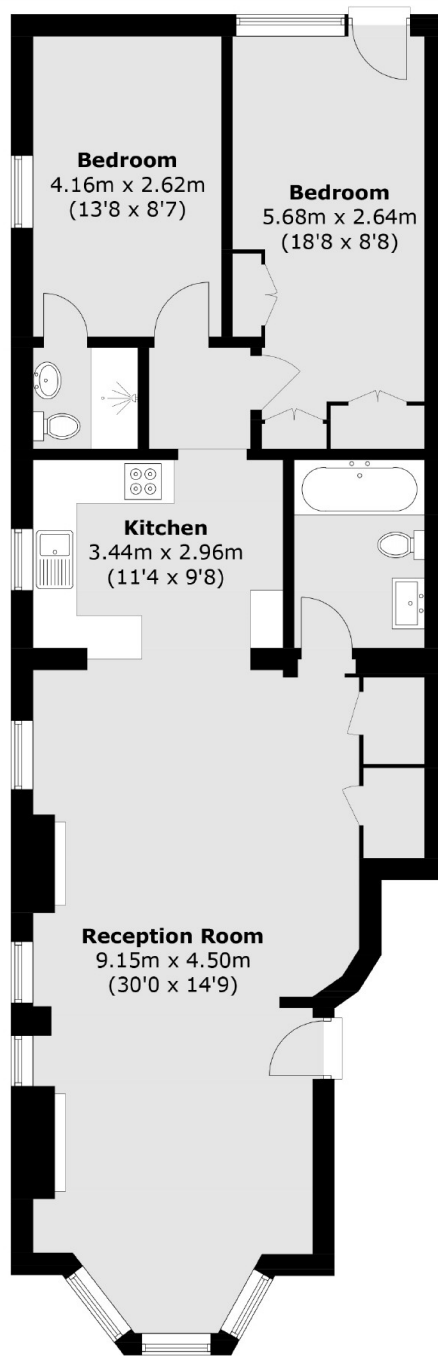
A large two bedroom ground floor garden flat in the heart of Shepherd's Bush. This property has a spacious living area, a private garden and would make a wonderful first home or investment.

Frithville Gardens offers ideal access to Hammersmith Park and the local amenities found on Uxbridge Road. Westfield Shopping centre is a short walk away.

Features

- Two Bedrooms
- Private Garden
- Share Of Freehold
- Ground Floor
- Central Line
- Off Street Parking

Frithville Gardens, London, W12



Ground Floor

Total area (approx.): 85.7 sq. m (922.3 sq. ft)