



Shepherd's Bush Green, W12

£300,000

With breathtaking views of London, this fantastic flat would make a great home or ideal buy to let investment. The flat has open plan kitchen living space and three double bedrooms. Cash buyers only.

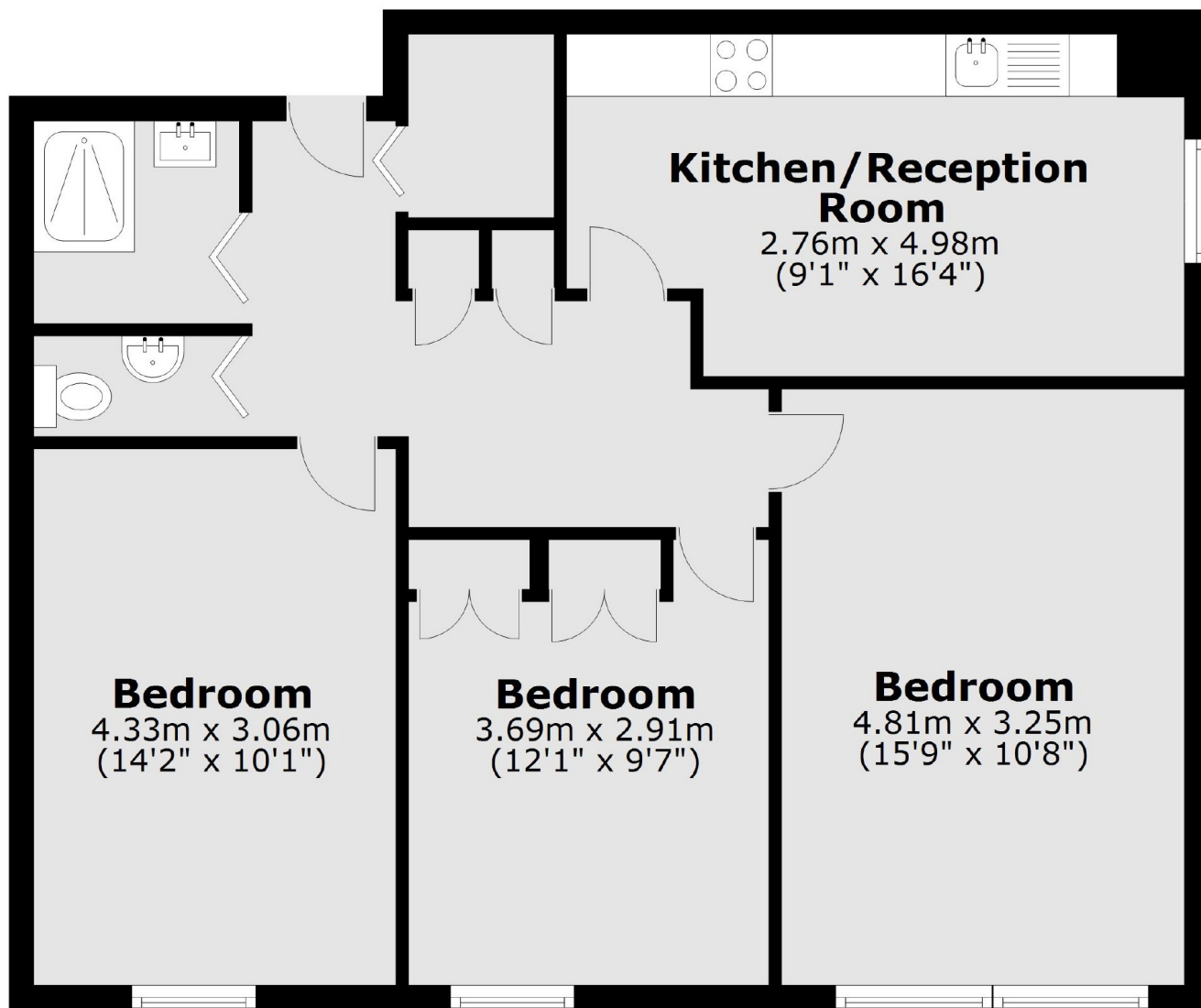
Shepherd's Bush Green is well served by local restaurants, shops and bars. Shepherd's Bush (Central, Hammersmith & City lines) is the nearest tube station.

Features

- Three Bedrooms
- Separate Kitchen
- Fifteenth Floor
- Lift Service
- No Chain
- Central Line

Shepherds Bush Green, London, W12

Fifteenth Floor



Total area: approx. 69.1 sq. metres (744.2 sq. feet)