



Sinclair Road, W14

£325,000

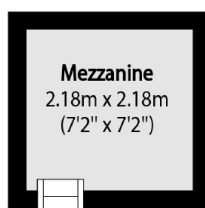
A large studio flat on the lower ground floor of this Victorian Conversion. This property has an open plan kitchen living with bay window and high ceilings as well as separate office area that would make a perfect work from home space.

Sinclair Road is a residential street situated west of Holland Park and runs through the Brook Green conservation area. The local amenities of High Street Kensington are nearby.

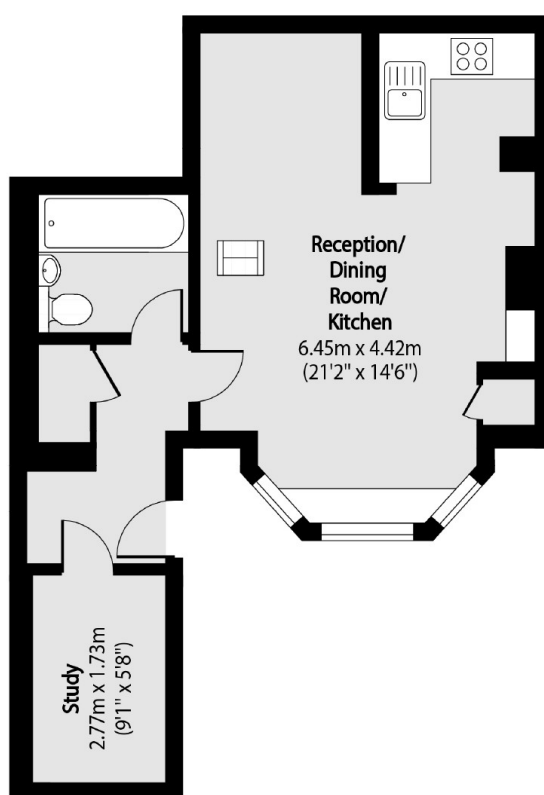
Features

- Studio Apartment
- Own Entrance
- Open Plan Living
- Brook Green
- High Ceilings
- Workshop/ Office

Sinclair Road, London, W14



Mezzanine



Lower Ground Floor

Total area (approx): 45.80 sq m (493 sq. ft)
(Including Mezzanine)

Mezzanine total area (approx): 4.73 sq m (518 sq. ft)