



Pavilion Parade, W12

£350,000

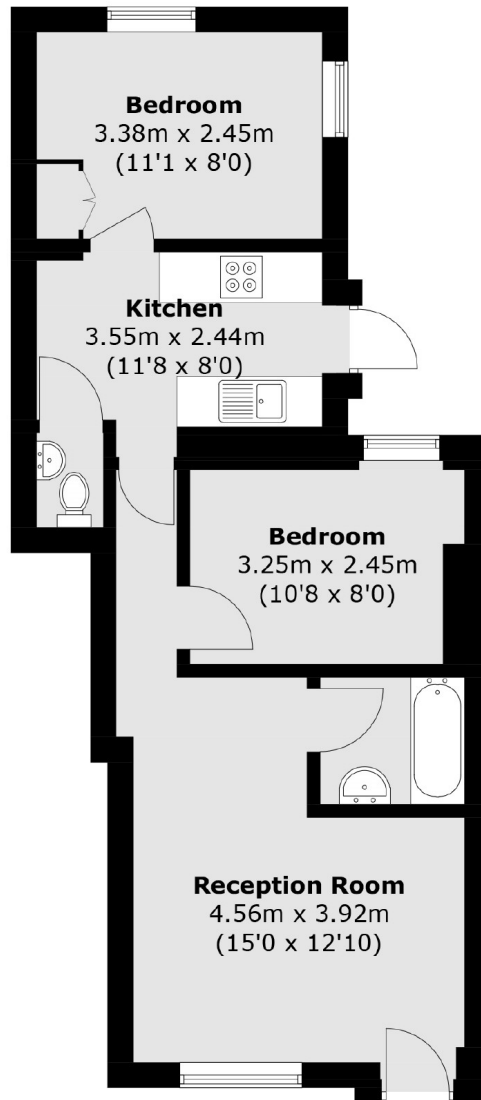
A spacious ground floor two bedroom garden flat located between Shepherds Bush and Notting Hill. This property has a large reception room, a separate kitchen, two bedrooms and a private garden. This property would make a fantastic first home or buy to let investment.

Pavilion Parade is located within easy reach of Ladbroke Grove, Notting Hill and Shepherds Bush. Westfield shopping centre and White City station are a short walk away. Catchment area of two outstanding local schools.

Features

- Two Bedroom
- Victorian Conversion
- Private Garden
- Separate Kitchen
- No Chain
- Central Line

Pavilion Parade, London, W12



Ground Floor

Total area (approx.): 46.9 sq. m (504.8 sq. ft)