



Elsham Terrace, W14

£290,000

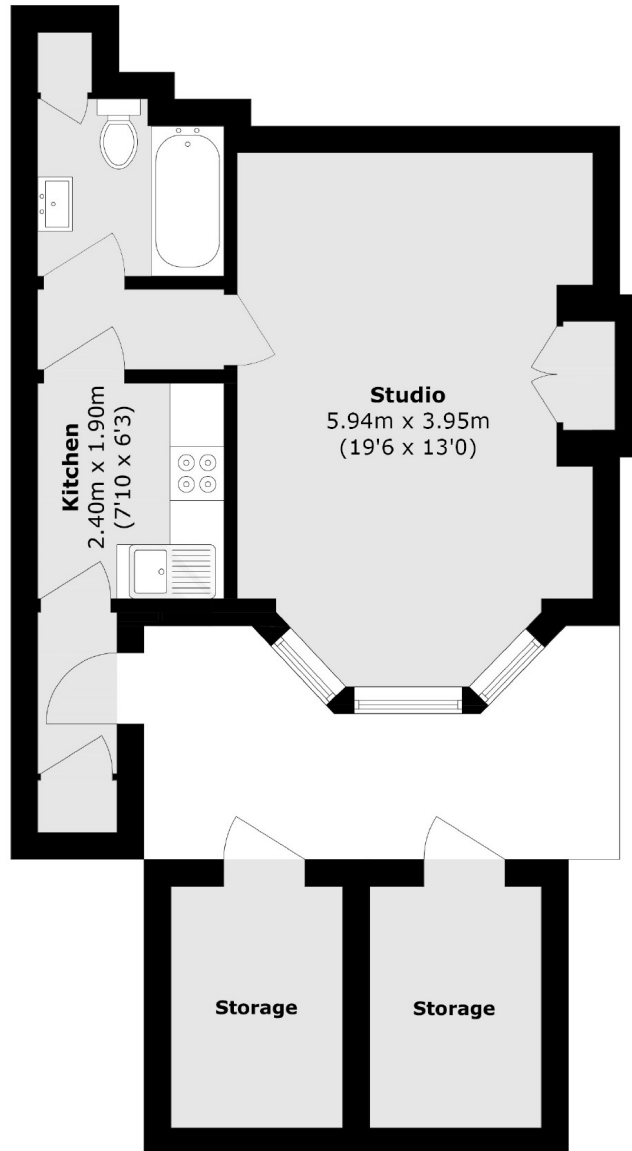
A spacious studio apartment on the lower ground floor of a beautiful Victorian townhouse. This property has large living/bedroom with separate kitchen, bathroom, sash windows and plenty of storage.

This property is located between Kensington Olympia and the green space of Holland Park. Westfield Shopping Centre is nearby and there are many transport links including the Central Line, Overground and District.

Features

- Studio Apartment
- Victorian Conversion
- Fantastic Location
- Separate Kitchen
- RBKC
- Central Line

Elsham Terrace, London, W14



Total area (approx.): 36.8 sq. m (396.1 sq. ft)

Storage area (approx.): 10.2 sq. m (109.7 sq. ft)