



Havilland Mews, W12

£623 Per week



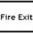




Short let. A fantastic, large purpose built one bedroom flat in this desirable gated development. With larger than average living space and doors leading onto outside space this really is an exemplary apartment.

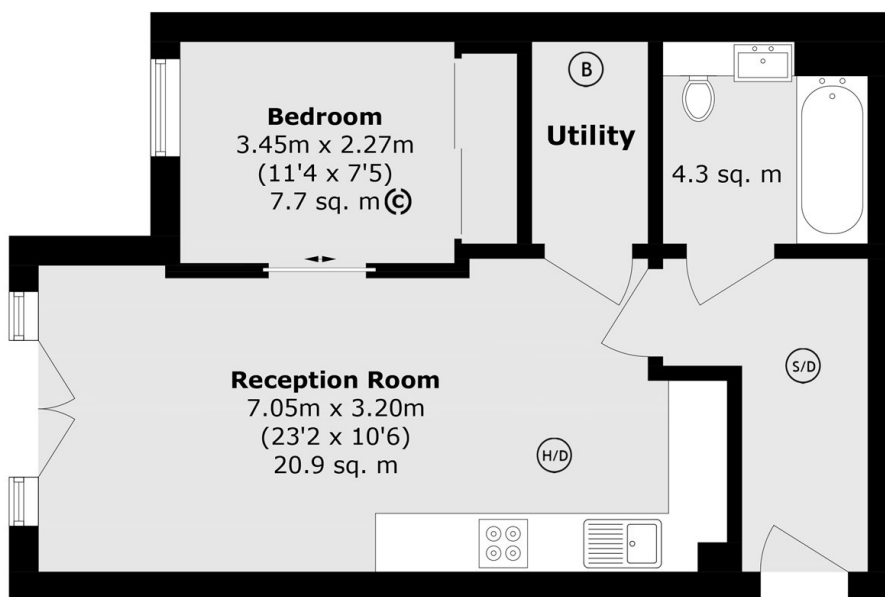
Havilland Mews is in the heart of Shepherd's Bush. The development is a short walk from Shepherd's Bush underground station with a variety of transport options.

Features

- One Double Bedroom
- Ample Storage
- Communal Gardens
- Gated Development
- Close To Amenities
- Transport Links

Havilland Mews, London, W12

-  S/D Smoke Detector
-  F/B Fire Blanket
-  Fire Exit Fire Exit
-  F/E Fire Extinguisher
-  H/D Heat Detector
-  B Boiler
-  Co/D Carbon Monoxide Detector



Ground Floor

Total area (approx.): 43.5 sq. m (468.2 sq. ft)

National Guidelines (may differ depending on Local Authority).

- E) 4.6 square meters > = no one**
- D) 4.6 - 6.5 square meters = 1/2 person (Child up to 10 years)**
- C) 6.5 - 8.4 square meters = 1 person**
- B) 8.4 - 10.2 square meters = 1 1/2 people**
- A) 10.2 meters < = 2 people**