

## St. Stephens Avenue, W12

### £550,000

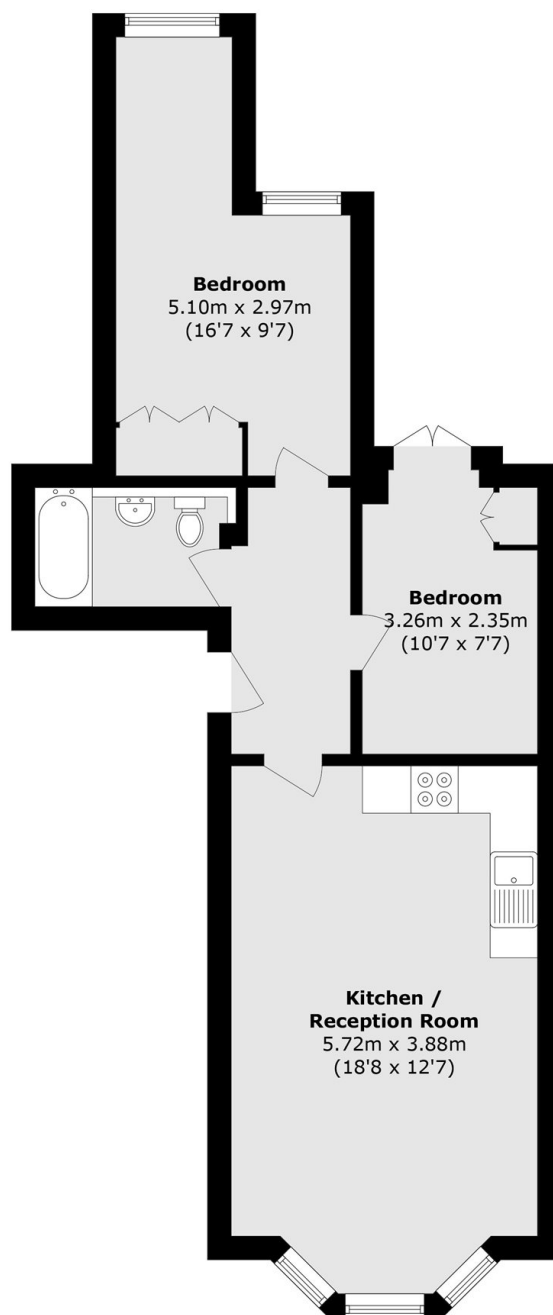
A well-presented two bedroom garden flat located on one of the most sought after roads in W12. On the ground floor, this property has an open plan kitchen and living space with a bay window, two double bedrooms, a family bathroom and a private garden with the potential to extend into (STPP).

St. Stephens Avenue is situated in the popular Triangle area, in the catchment area of St. Stephens school and is close to Ravenscourt and Hammersmith Park. Plus all the local amenities located and transport links in Shepherds Bush, as well as Westfield Shopping Centre.

### Features

- Two Double Bedrooms
- Private Garden
- Potential to Extend (STPP)
- Open Plan Living
- Central + H&C Lines
- Close to Local Parks

# St. Stephens Avenue, London, W12



Total area (approx.): 55.8 sq. m (600.6 sq. ft)