



Thornfield Road, W12

£496 Per week

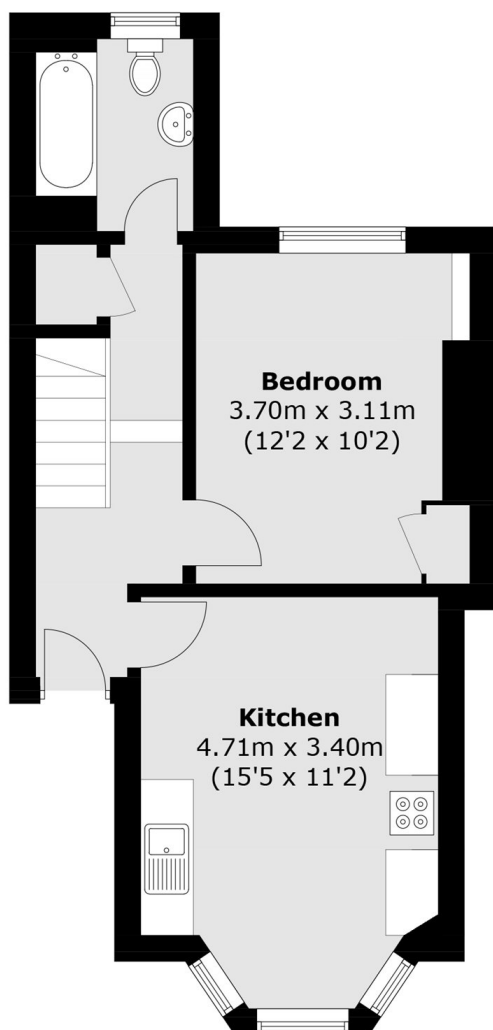
A bright split-level two-bed, one-bath flat on Thornfield Road, W12, arranged over the ground and upper floors of a Victorian house. It features an open-plan living/kitchen space and two well-proportioned bedrooms, all close to transport links and Shepherds Bush amenities.

Thornfield Road is a quiet street ideally located for the amenities of Uxbridge Road and the transport links to Central London. Westfield Shopping centre is nearby.

Features

- Two Double Bedrooms
- Split Level
- Quiet Road
- Ample Storage
- Transport Links
- Sharer Friendly

Thornfield Road, London, W12



Raised Ground Floor



First Floor

Total area (approx.): 58.1 sq. m (625.3 sq. ft)