

Rockley Road, W14

£530 Per week

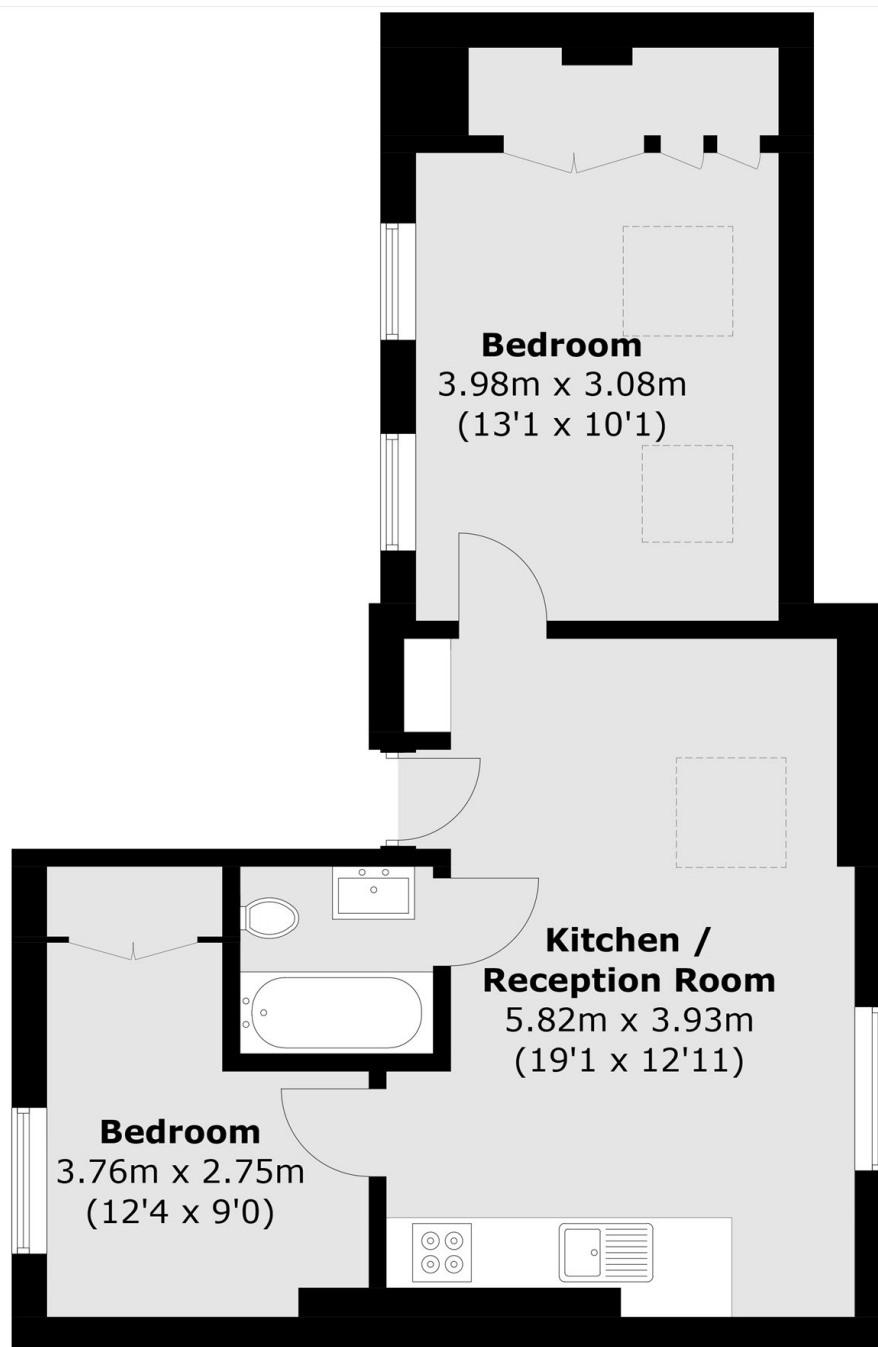
A bright top floor flat offering two bedrooms, a light-filled reception room, a modern kitchen and contemporary bathroom. This property is conveniently located close to local amenities and transport.

Rockley Road is a quiet residential street close to Shepherd's Bush, offering easy access to local shops, cafés, excellent transport links and Westfield London.

Features

- Two Double Bedrooms
- Top Floor Flat
- Quiet Road
- Great Location
- Transport Links
- Ample Storage

Rockley Road, London, W14



Total area (approx.): 49.3 sq. m (530.7 sq. ft)

Dexters

Shepherds Bush and Brook Green
53 Shepherds Bush Green
London
W12 8PS
Lettings
020 8723 8899

Energy Rating: D. We aim to make our particulars both accurate and reliable. However they are not guaranteed; nor do they form part of an offer or contract. If you require clarification on any points then please contact us, especially if you're traveling some distance to view. Please note that appliances and heating systems have not been tested and therefore no warranties can be given as to their good working order.

 **RICS** | Regulated
Estate Agent
and Letting Agent

dexters.co.uk