



Blythe Road, W14

£600,000

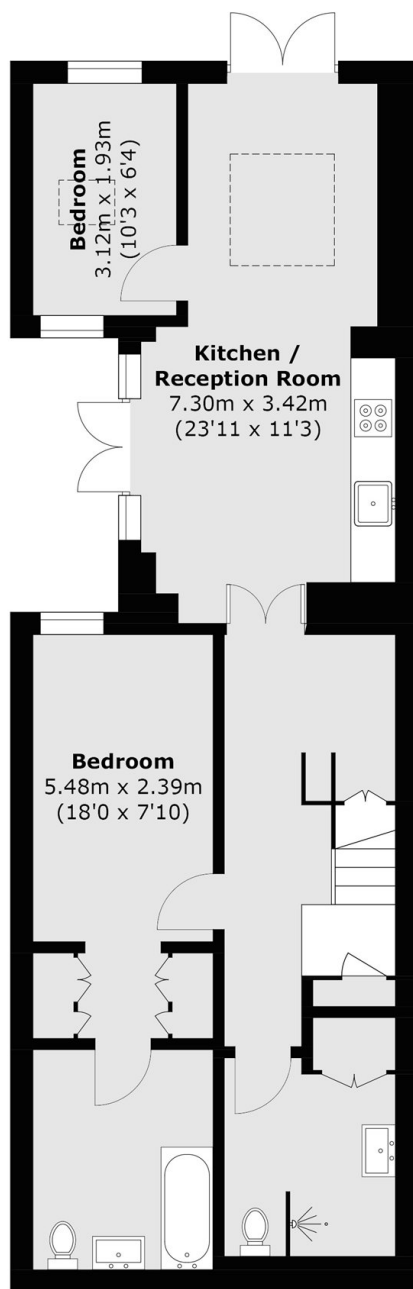
Located on the lower ground floor is this tastefully furnished two bedroom flat. This property comes complete with two bathrooms, an open plan kitchen and living space, a small courtyard and a larger private garden. It would make a wonderful home for the next buyers.

Blythe Road is a popular road in the sought after area of Brook Green. It is close to the cafés, restaurants and shops of High Street Kensington, along with the green space of Holland Park.

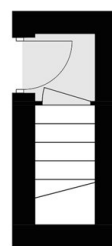
Features

- Two Bedrooms
- Lower Ground Floor
- Private Garden and Courtyard
- Elegant Finish
- Brook Green
- Open Plan Living

Blythe Road, London, W14



Lower Ground Floor



Ground Floor

Total area (approx.): 72.7 sq. m (782.5 sq. ft)