



Goldhawk Road, W12

£1,100,000

Situated on a popular residential road is this duplex apartment. This property has over 1,100 sq ft of living space, offering great value in a central location. This excellent home is a perfect fit for those looking to move to a highly sought after part of west London.

Goldhawk Road is ideally located for the various amenities of Shepherd's Bush. The property is under a mile from the popular Westfield Shopping Centre and an array of independent coffee shops, restaurants and bars are on your doorstep on Goldhawk Road. Goldhawk Road Underground is less than 100m away, Shepherds Bush Underground and Overground, and Hammersmith Station are under a mile away offering excellent connections in and out of the city.

Features

- Three Double bedrooms
- Roof Terrace
- Long Lease
- Split-Level
- Great Location
- Open Plan Kitchen/Reception



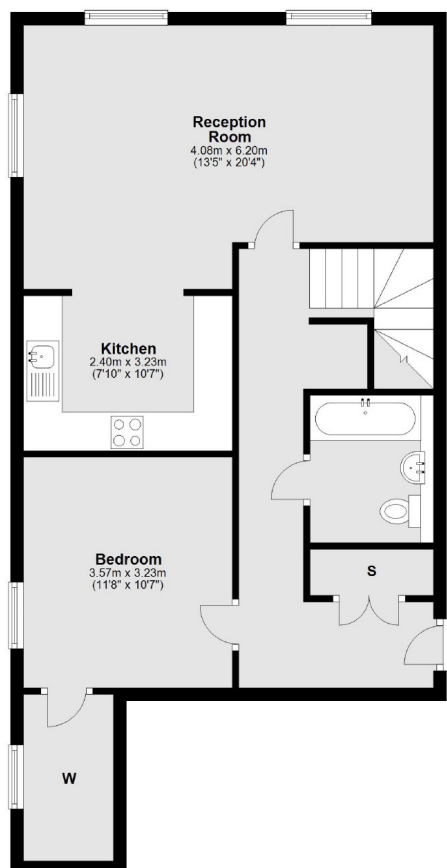
Goldhawk Road, W12

Upon entering the apartment, there is a convenient storage cupboard, a large double bedroom, a modernised family bathroom before you reach a spacious open plan kitchen/living. The kitchen is complete with plenty of cabinets, a worktop space and fitted appliances. On the top floor you have two additional double bedrooms, a modern bathroom and access onto a wrap around roof terrace.

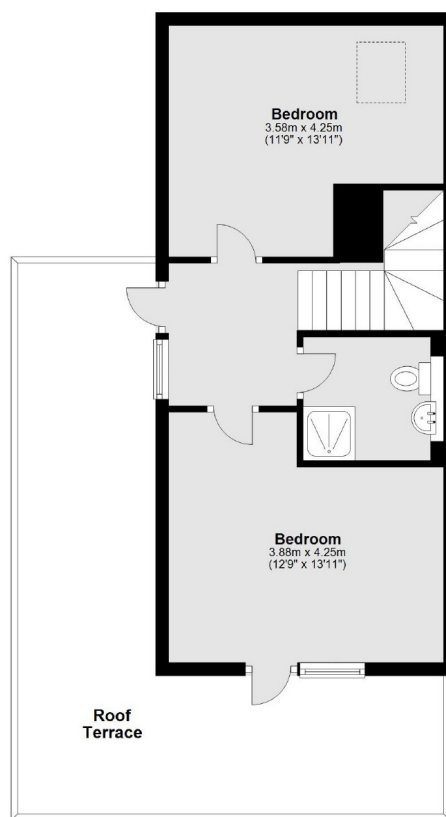


Goldhawk Road, London, W12

Second Floor



Third Floor



Main area: Approx. 110.6 sq. metres (1190.8 sq. feet)
Plus roof terrace, approx. 28.8 sq. metres (309.7 sq. feet)