



Goldhawk Road, W12

£1,200,000

Located within a tasteful development set back from Goldhawk Road, is this wonderful, split-level, three bedroom property. Offering over 1,300 sq ft of living space, this property has been excellently renovated throughout to offer modern family living. This exceptional and incredibly well-presented home is offered to the market with a with a long lease and no onward chain.

Goldhawk Road is ideally located for the various amenities of Shepherd's Bush. The property is under a mile from the popular Westfield Shopping Centre and an array of independent coffee shops, restaurants and bars are on your doorstep on Goldhawk Road. Goldhawk Road Underground is less than 100m away, Shepherds Bush Underground and Overground, and Hammersmith Station are under a mile away offering excellent connections in and out of the city.

Features

- Three Double bedrooms
- Private Courtyard
- Long Lease
- Split-Level
- Private Entrance
- Open Plan Kitchen/Reception



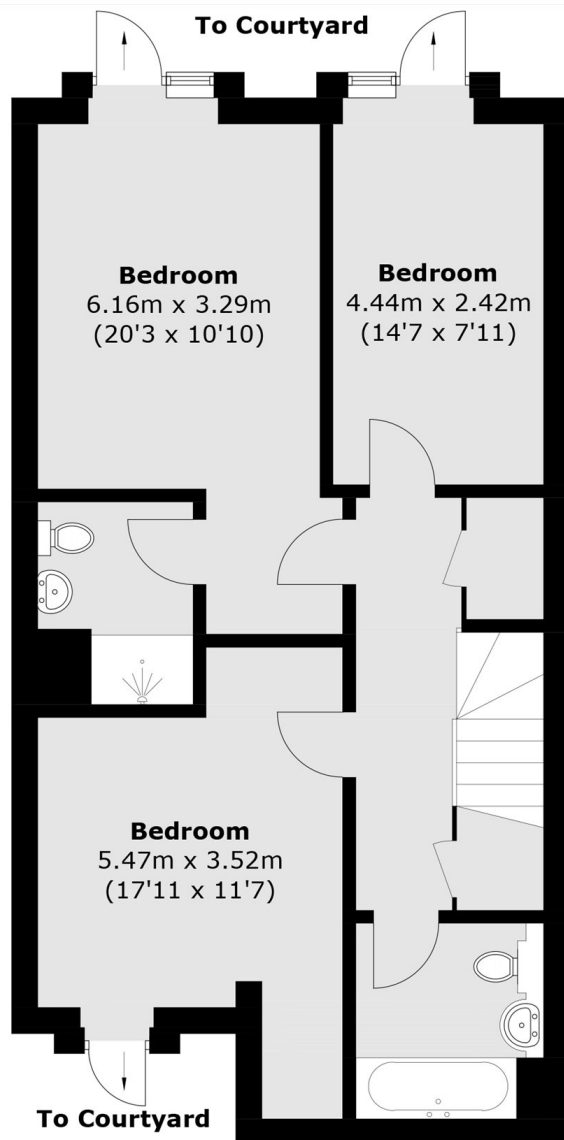
Goldhawk Road, W12

Entering on the ground floor through a private entrance you have a wide corridor with a guest bathroom and storage before entering a spacious and bright open plan kitchen/reception room. The kitchen is complete with plenty of cabinets, worktop space, fitted appliances and wooden flooring through this floor.

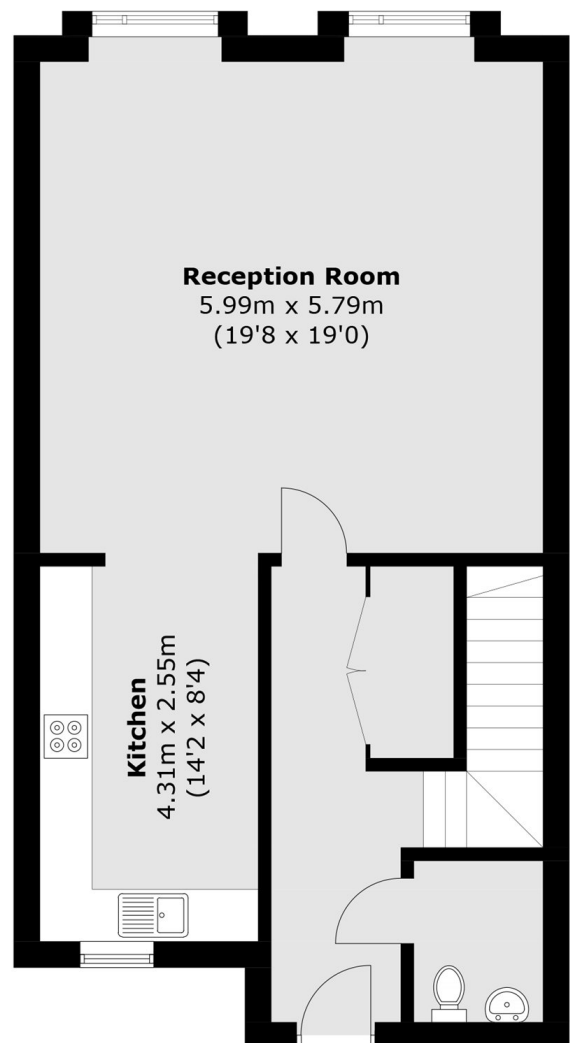
On the lower ground floor you will find three double bedrooms with the primary boasting an en-suite and access out to a private courtyard. A spacious and modern family bathroom also serves this floor.



Goldhawk Road, London, W12



Lower Ground Floor



Ground Floor

Total area (approx.): 127.3 sq. m (1,370.2 sq. ft)