

## St. Stephens Avenue, W12

£650,000

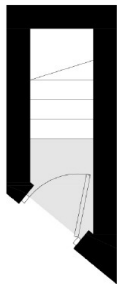
A split level period conversion apartment on popular tree lined street. This bright and spacious property has open plan kitchen living, three bedrooms, two bathrooms and a private roof terrace.

St Stephens Avenue offers ideal access to Ravenscourt Park and the local amenities located in Shepherds Bush, as well as Westfield Shopping Centre.

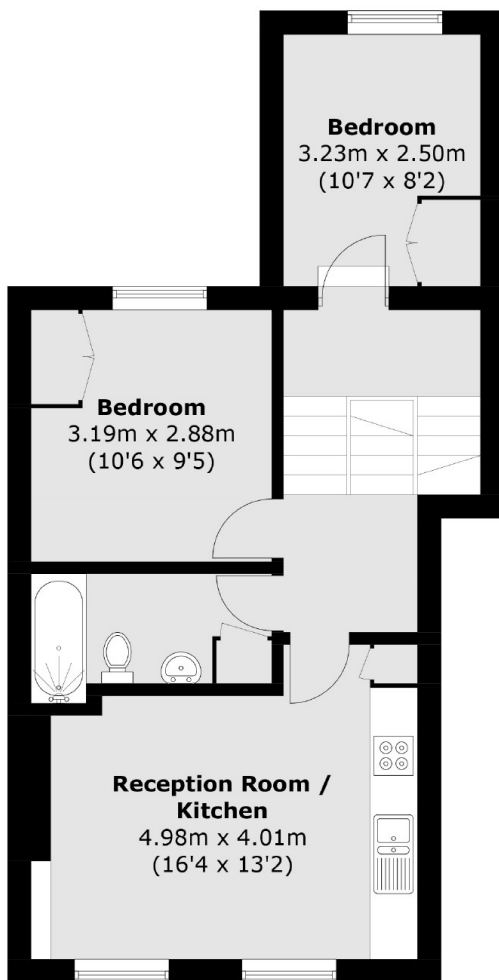
### Features

Three Bedrooms  
Two Bathrooms  
Split Level  
Period Conversion  
Private Terrace  
Top Floor

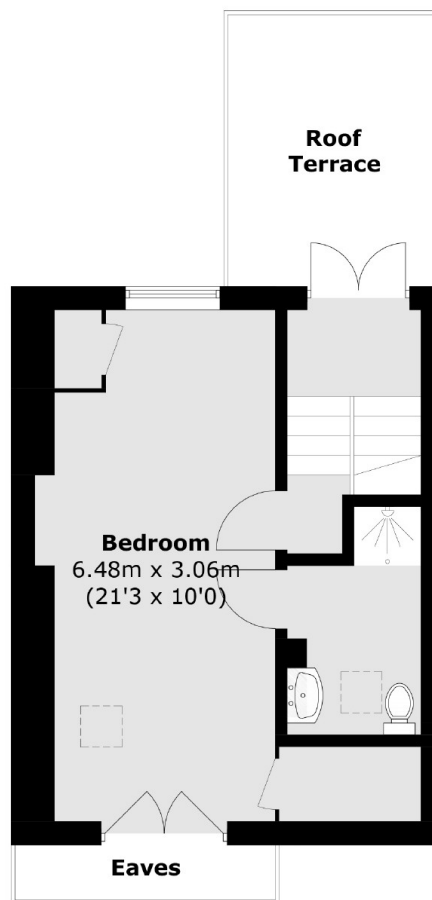
# St. Stephens Avenue, London, W12



## Ground Floor



## First Floor



## Second Floor

Total area (approx.): 83.8 sq. m (901.9 sq. ft) (Excluding Eaves)  
Roof Terrace : 9.3 sq. m (100.1 sq. ft)

# Dexters

Shepherds Bush and Brook Green  
53 Shepherds Bush Green  
London  
W12 8PS  
Sales  
020 8740 2900

Energy Rating: C. We aim to make our particulars both accurate and reliable. However they are not guaranteed; nor do they form part of an offer or contract. If you require clarification on any points then please contact us, especially if you're traveling some distance to view. Please note that appliances and heating systems have not been tested and therefore no warranties can be given as to their good working order.

 **RICS** | Regulated  
Estate Agent  
and Letting Agent

[dexters.co.uk](http://dexters.co.uk)