



Batoum Gardens, W6

£550,000

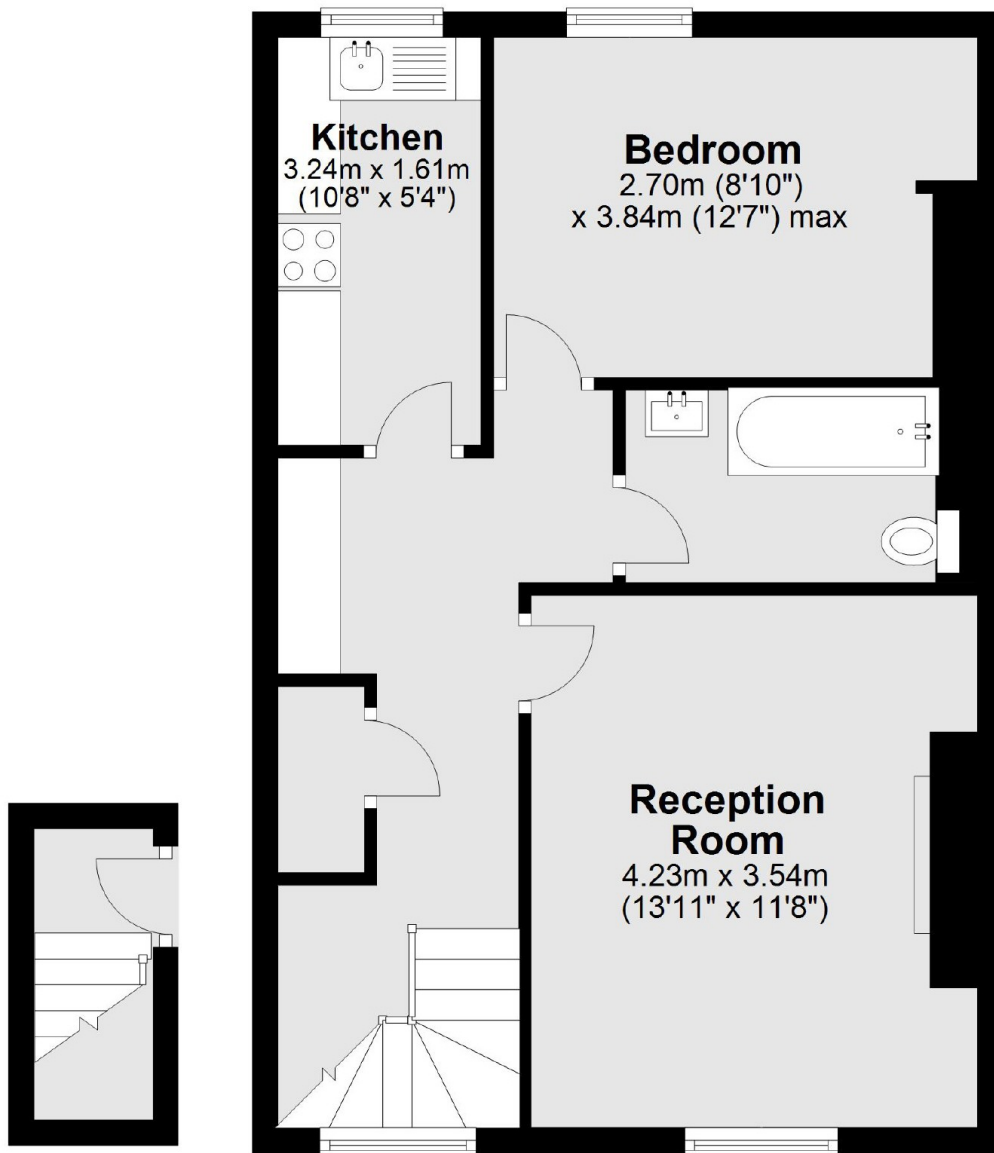
A one bedroom flat on top floor of this Victorian conversion. This property has a separate kitchen, potential to extend and offers the chance to add your own stamp.

Batoum Gardens is located close to the local amenities of Shepherds Bush Road. Westfield Shopping Centre is nearby and the green space of Holland Park is a short walk away.

Features

- One Bedroom
- Top Floor
- Leasehold
- Potential to Extend
- Brook Green
- No Onwards Chain

Batoum Gardens, London, W6



Total area: approx. 50.3 sq. metres (541.9 sq. feet)

Dexters

Shepherds Bush and Brook Green
53 Shepherds Bush Green
London
W12 8PS
Sales
020 8740 2900

Energy Rating: C. We aim to make our particulars both accurate and reliable. However they are not guaranteed; nor do they form part of an offer or contract. If you require clarification on any points then please contact us, especially if you're traveling some distance to view. Please note that appliances and heating systems have not been tested and therefore no warranties can be given as to their good working order.

 **RICS** | Regulated
Estate Agent
and Letting Agent

[dexters.co.uk](https://www.dexters.co.uk)