



Askew Crescent, W12

£692 Per week

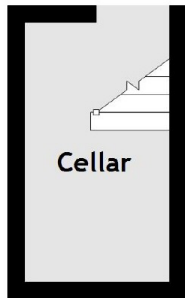
This charming Victorian house has three double bedrooms, a separate kitchen and private outside space. The property is split across three floors and has its own private entrance.

The property is situated in the popular area of Askew Village and in the catchment area to outstanding Ofsted rated schools, with Ravenscourt Park also near by.

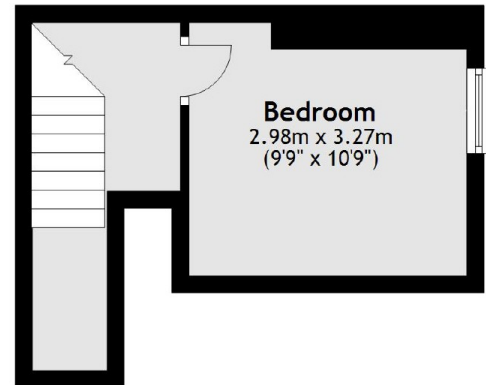
Features

Askew Village
Three Bedrooms
Private Courtyard
Semi Detached
Ample Storage
Separate Cellar

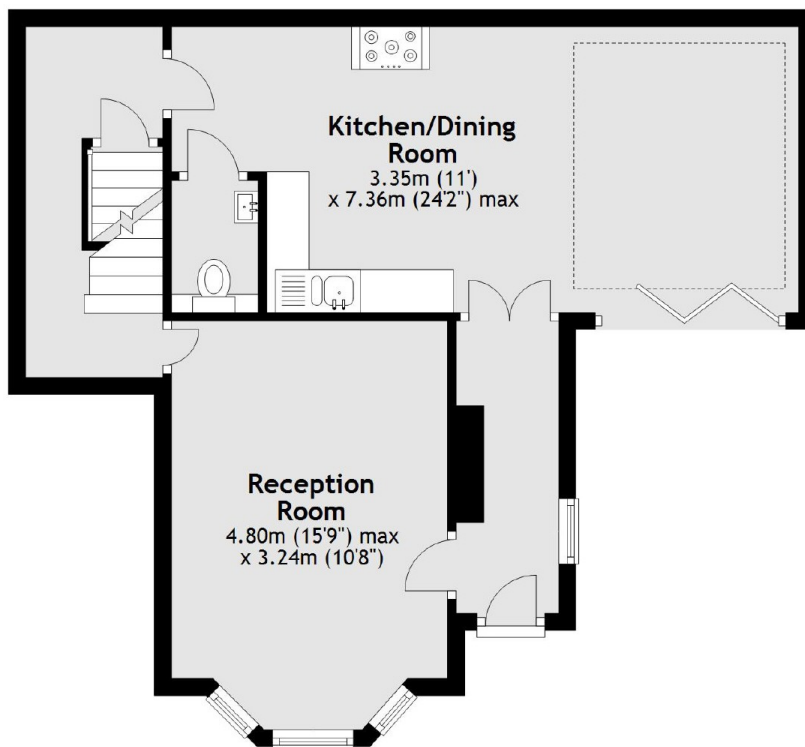
Askew Crescent, London, W12



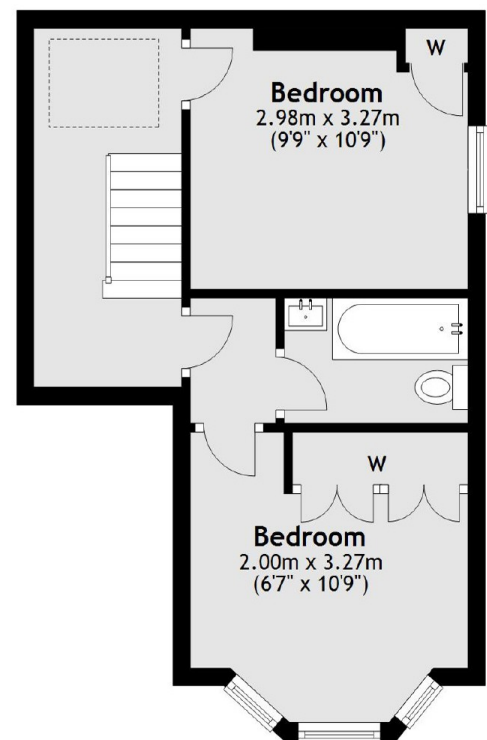
Cellar



First Floor



Ground Floor



Second Floor

Total area: approx. 104.1 sq. metres (1120.6 sq. feet)

Dexters

Shepherds Bush and Brook Green
53 Shepherds Bush Green
London
W12 8PS
Lettings
020 8723 8899

Energy Rating: D. We aim to make our particulars both accurate and reliable. However they are not guaranteed; nor do they form part of an offer or contract. If you require clarification on any points then please contact us, especially if you're traveling some distance to view. Please note that appliances and heating systems have not been tested and therefore no warranties can be given as to their good working order.

 **RICS** | Regulated
Estate Agent
and Letting Agent

dexters.co.uk