



## Fitzneal Street, W12

### £475,000

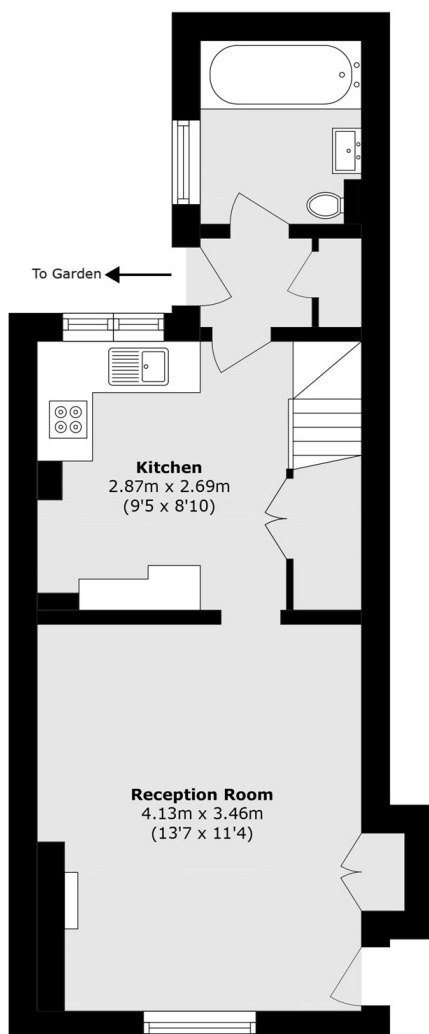
This unique two double bedroom house, located on a quiet street moments away from local shops and a short walk to East Acton Tube Station. The property benefits from a private south/west facing garden and is sold chain free.

Fitzneal Street is ideally located for easy access to Shepherds Bush and Westfield Shopping Mall which is also a short distance away. The transport links offer a good commute into Central London.

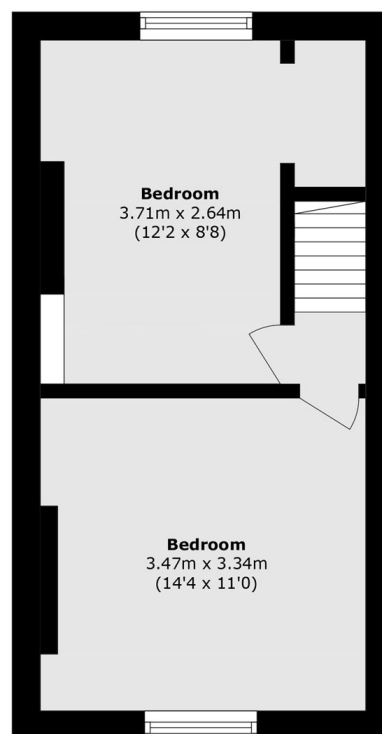
### Features

- Two Double Bedrooms
- Reception/Living Room
- Separate Kitchen
- Garden
- Proximity To Local Shops
- Short Walk To Tube & Bus Links

# Fitzneal Street, London, W12



**Ground Floor**



**First Floor**

Total area (approx.): 55.4 sq. m (596.3 sq. ft)