



Batman Close, W12

£576 Per week

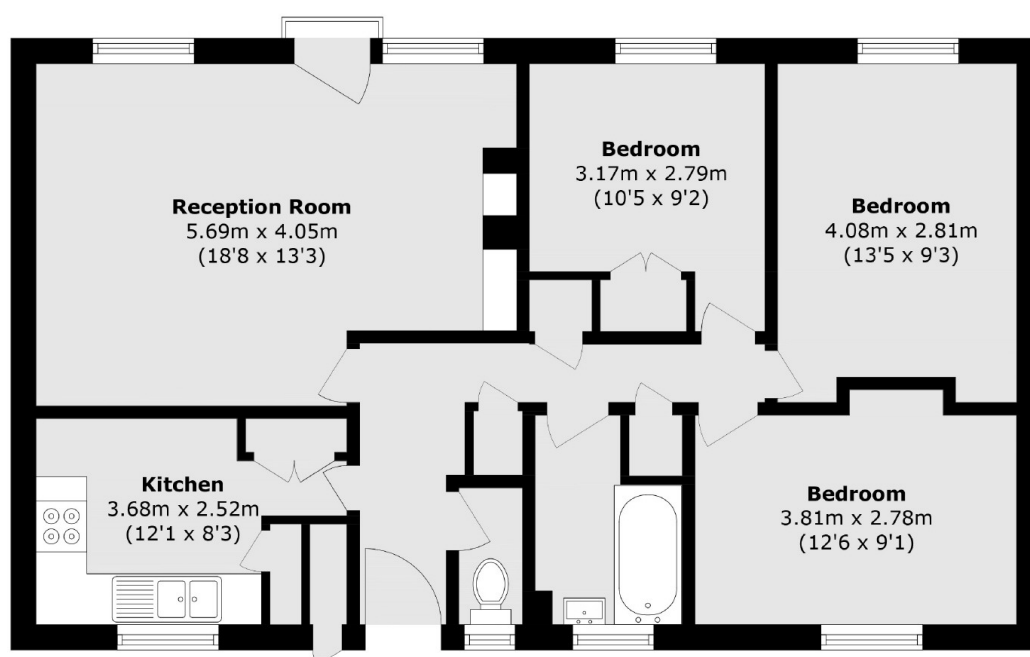
A fully refurbished three bedroom apartment situated next to Hammersmith Park. This beautiful property has been well presented throughout and has three double bedrooms, separate kitchen and living rooms, family bathroom and ample storage.

The property is close to White City, Wood Lane and Shepherds Bush Stations (Central, Circle, Hammersmith & City & Overground). All the amenities of Westfield Shopping Centre, Television Centre/Soho House & Hammersmith Japanese garden are all a short walk.

Features

Three Bedrooms
Separate Kitchen
Large Reception Room
Modern Bathroom
Part Furnished
White City

Batman Close, London, W12



Total area (approx.): 76.5 sq. m (823.4 sq. ft)
External cupboard (approx.): 0.5 sq. m (5.3 sq. ft)