



White City Estate, W12

£400,000

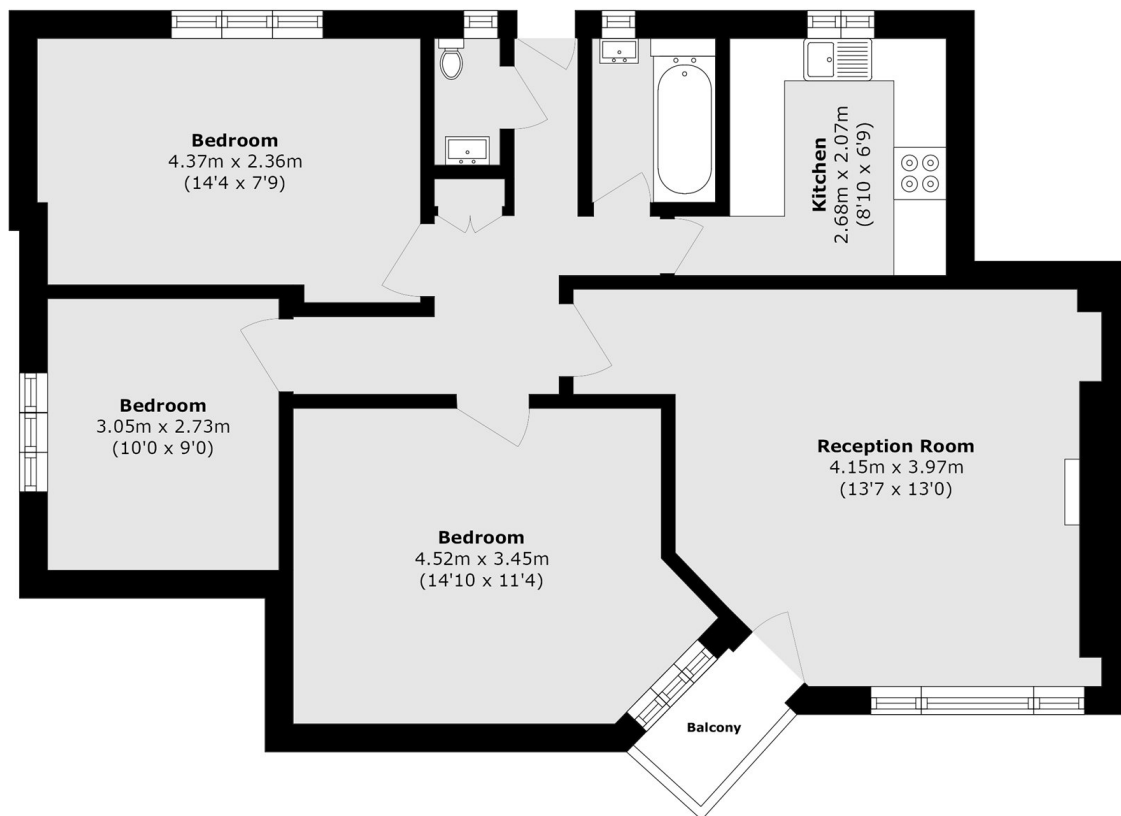
This bright, top-floor, purpose-built flat is set on the edge of the White City Estate and benefits from uninterrupted views. The building is serviced by both a lift and stairs, making the flat easily accessible. An ideal first home or investment opportunity, the property was fully renovated in 2017, including complete rewiring and re-plumbing, a modern fitted kitchen, and a new bathroom and separate WC. The flat has been redecorated to a high standard, featuring recessed spotlights throughout and pale grey wooden flooring with acoustic underlay. Accommodation comprises three generous double bedrooms and a large sitting room that opens onto a south-facing balcony, spacious enough for a table and chairs perfect for outdoor dining or relaxing in the sun.

Mackay House is located on the edge of the White City Estate, close to Westfield White City, BBC Centre, numerous shops, restaurants and bars. Sainsbury's and Wormholt Park less than a mile away. It is ideally located, providing easy access to the A40 and transport into Central London. Transport links are excellent. Central and Hammersmith & City Line tubes.

Features

- Separate Kitchen/Living
- Private Balcony
- Renovated 2017
- HMO Licenced
- No Onward Chain
- Residents Parking

White City Estate, London, W12



Total area (approx.): 71.0 sq. m (764.2 sq. ft)
Balcony area (approx.): 2.97 sq. m (31.9 sq. ft)