



White City Estate, W12

£425,000

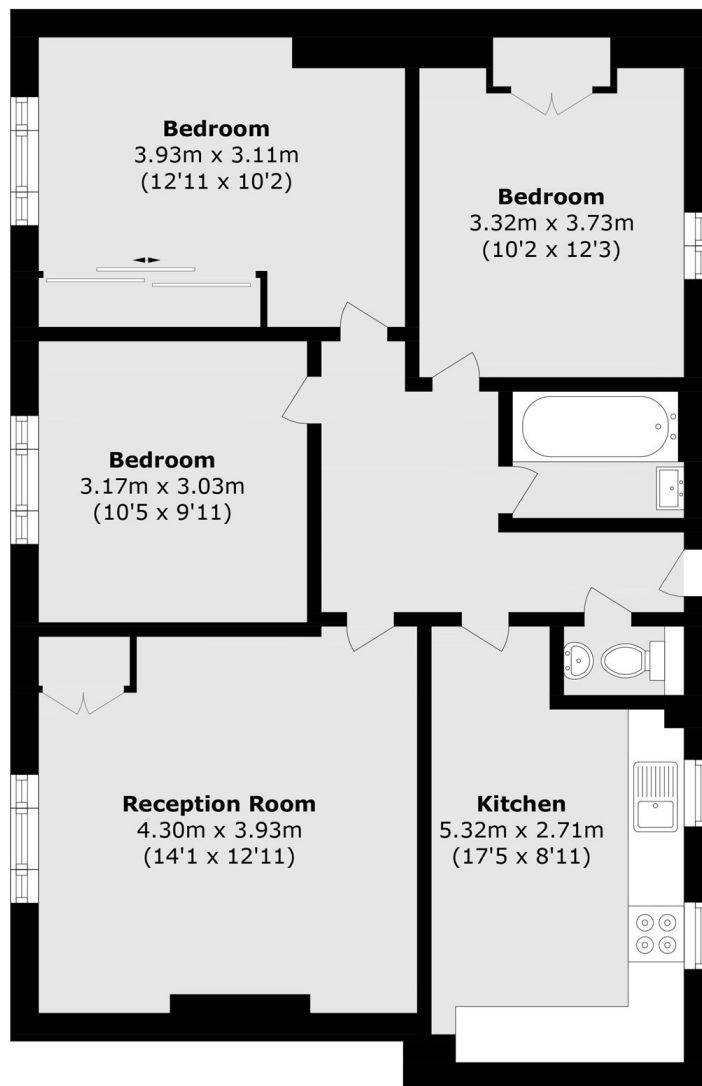
A spacious, three double bedroom apartment right in the heart of Shepherd's Bush. A perfect opportunity for both first time buyers looking for a spacious home or investors looking to add a high yield property to their portfolio (rooms rent out for £1,000 per month). The property is also offered to the market chain free.

Situated in one of West London's most dynamic neighbourhoods, the property sits at the centre of the White City Innovation District, where over £2 billion of recent investment from Imperial College has driven exceptional growth and strong rental demand from students and professionals. With Westfield London, multiple tube stations, local amenities, parks, and excellent schools all close by, this is an exceptional opportunity for both families and investors seeking space, convenience and future value.

Features

- Three Double Bedrooms
- 800 sq. ft Of Space
- Westfield Shopping Centre
- Wormholt Park
- Close to Transport Links
- No Onward Chain

White City Estate, London, W12



Total area (approx.): 73.8 sq. m (794.3 sq. ft)