



Yew Tree Road, W12

£699,950

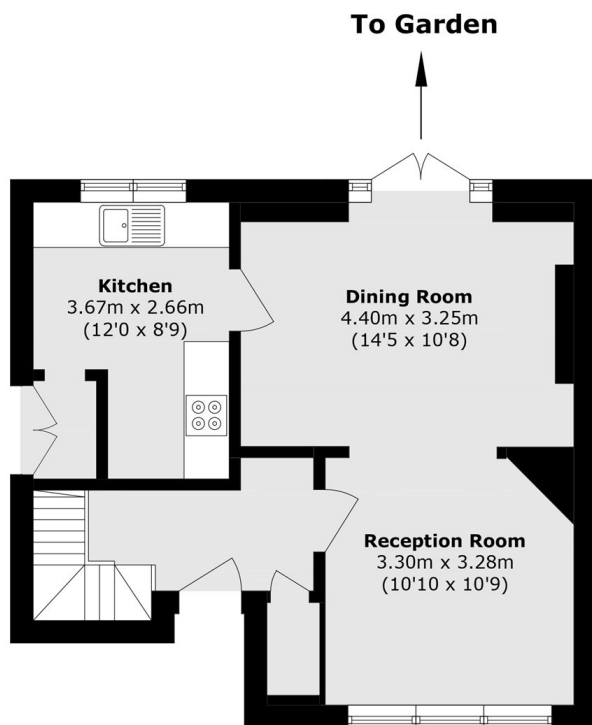
A three-bedroom semi-detached house in Shepherd's Bush. The property includes three bedrooms, a reception room with access to a separate kitchen, and a large private garden. The house requires updating throughout. Suitable for buyers looking to renovate or invest.

Situated close to East Acton Station (Central Line) and other amenities including Westfield Shopping Centre and easy access to the A40.

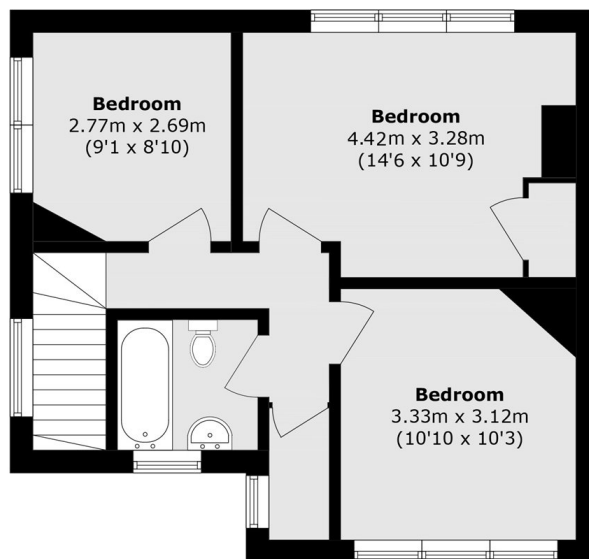
Features

- Freehold
- No Onward Chain
- Three Double Bedrooms
- Requires Updating
- Quiet Road
- Private Garden

Yew Tree Road, London, W12



Ground Floor



First Floor

Total area (approx.): 88.9 sq. m (956.9 sq. ft)