



Cobbold Road, W12

£550,000

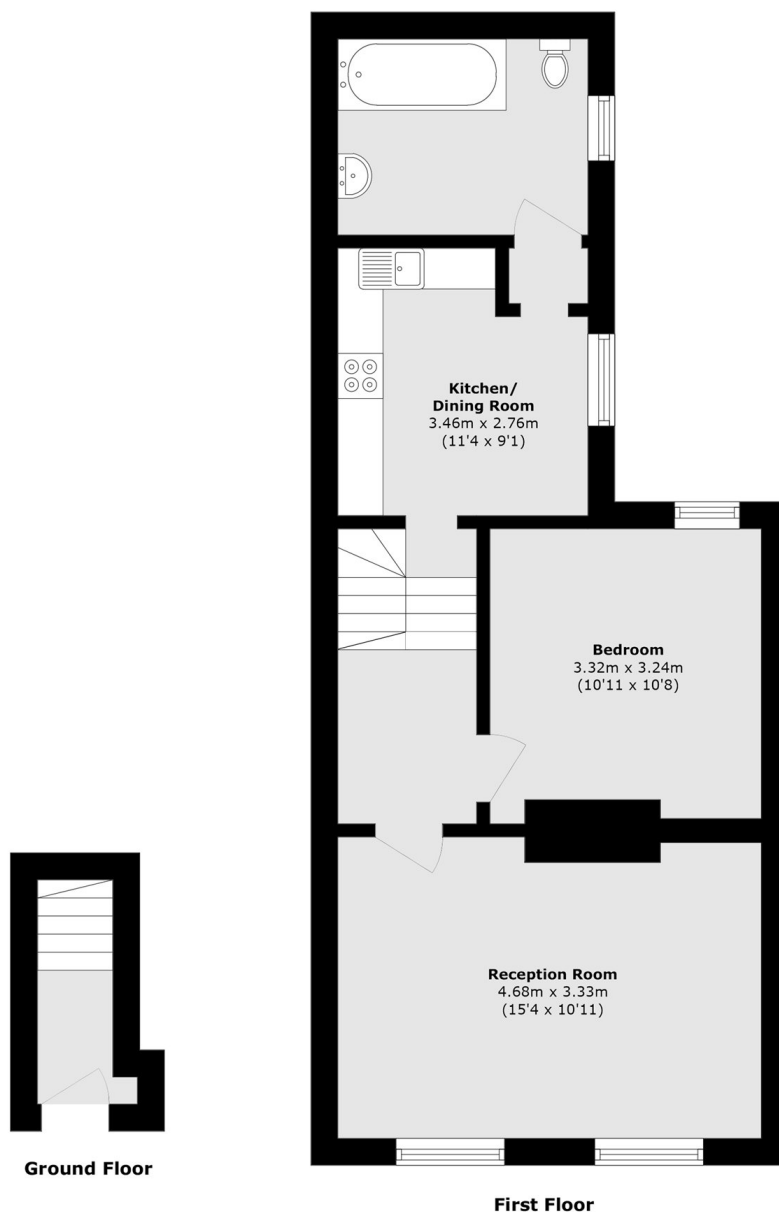
Situated on a charming tree-lined street, this bright one-bedroom flat offers comfortable living within easy reach of Shepherds Bush and Stamford Brook. With excellent transport connections, a separate kitchen, and generous storage space, it's perfectly suited for convenient city living.

Cobbold Road is a highly sought-after residential street in W12, located in the Wendell Park / Shepherd's Bush area of West London. It's known for its attractive Victorian terraced houses, leafy character and Askew Village at the end of the road.

Features

- One Bedroom
- Separate Living Room
- Eat in Kitchen
- Double Glazed Windows
- Ample Storage
- No Onward Chain

Cobbold Road, London, W12



Total area (approx.): 48.6 sq. m (523.1 sq. ft)